



ADAPTABILITY & PRECISION

CALIBRATION GAUGES FOR CHEMICAL INJECTION SYSTEMS BY KENCO



ENGINEERED FOR ACCURACY

ISO 9001:2015 CERTIFIED

PSG-30,000 SERIES AccuRate®

PUMP SETTING GAUGES

APPLICATIONS:

The Kenco PSG-30,000 series Pump Setting Gauges utilize individually calibrated scales based on the inside diameter of the sight tube to provide an extremely accurate reading when calibrating the flow rate of a chemical metering pump. Gauges can also be used to periodically monitor pump performance, accuracy of a chemical injection system, or as a primary containment reservoir for liquid pumped into a chemical injection system.

OPERATING PRINCIPLE:

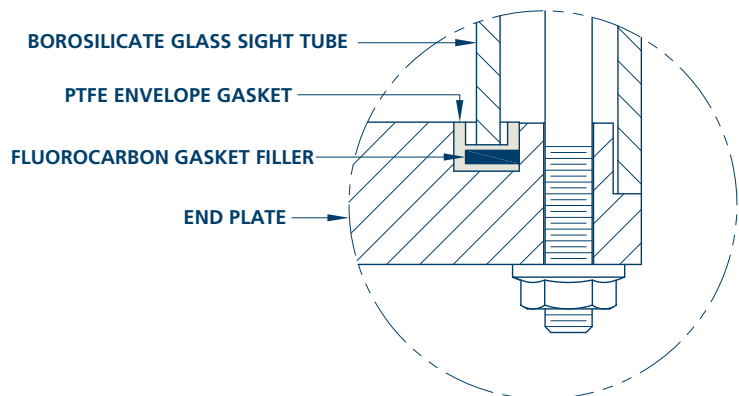
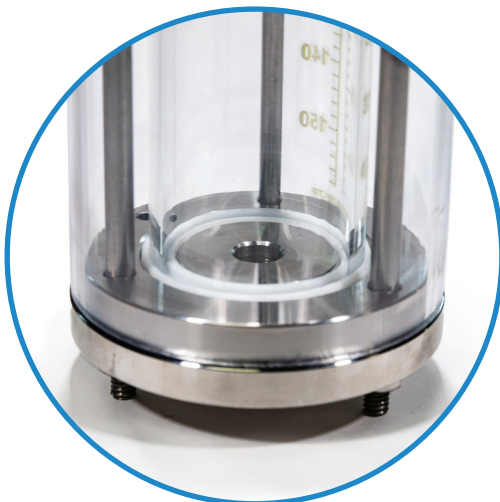
To check the flow rate of a chemical pump, isolate the chemical in the storage tank from the Pump Setting Gauge. Keep the isolation valve closed and observe the number of scale markings the liquid level passes in one minute. This will give you the actual chemical pump flow rate. If the rate is not the one desired, make an adjustment to the chemical metering pump feed rate and conduct as many one minute tests as necessary to achieve the chemical feed rate desired. The Pump Setting Gauge sight tube has a decal with (2) calibrated scales. The scale on the left side is a volume scale in milliliters (ML). In a one minute test, the scale will read the pump rate in milliliters per minute. The scale on the right side will depend on the desired flow rate unit of measure; i.e. Gallons per Day (GPD), Gallons per Hour (GPH), Liters per Day (LPD), Liters per Hour (LPH), U.S. Gallons by Volume (GBV) or Liters by Volume (LBV).



FEATURES:

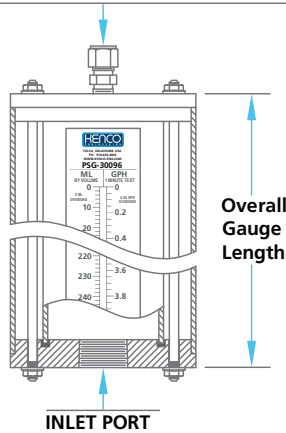
- Direct-Reading Volume/Rate scales on the sight tube are individually calibrated to the inside diameter of the glass to maintain a high level of accuracy.
- Scales are highly visible and labeled with well-sized characters for easy reading against all liquids.
- Six scale options are available: Gallons per Day (GPD), Gallons per Hour (GPH), Liters per Day (LPD), Liters per Hour (LPH), U.S. Gallons by Volume (GBV) and Liters by Volume (LBV). Each scale option includes a volume scale in milliliters (ML).
- Gauge sizes cover a broad range of flow rates from 16 Gallons per Day (60.57 Liters per Day) to 1440 Gallons per Day (5450.99 Liters per Day).
- Sight tube on all models is made from borosilicate glass.
- Clear thermoplastic sight tube shield for impact resistance is standard on all models.
- Close fit between inside diameter of sight tube shield and end plates enhances the structural stability of gauge and helps keep out unwanted contaminants between sight tube and shield.
- Lower end plate has drain hole(s) to prevent condensation build up.
- End plates are available in 316 stainless steel, PVC, CPVC, Alloy 20 and Hastelloy C-276. Other materials available upon request.
- Engineered PTFE envelope sight tube gaskets ensure compatibility with most liquids. Each has an integral PTFE isolation barrier to prevent glass from making contact with end plates and a fluorocarbon filler that provides a constant load on gaskets to ensure a positive seal.

SIGHT TUBE GASKET DESIGN



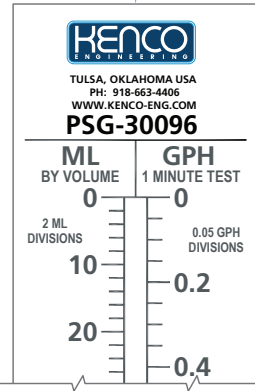
PSG-30,000 SERIES AccuRate® PUMP SETTING GAUGES

GAUGES WITH S6 / PVC END PLATES (EXCEPT PSG-31440) ARE SUPPLIED WITH A 3/8" OD TUBE X 1/4" NPT VENT TUBE CONNECTOR



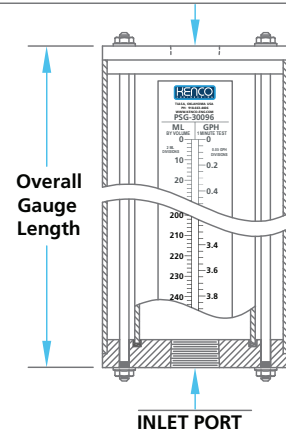
GAUGES WITH VENT TUBE CONNECTOR

ALL GAUGE CALIBRATION SCALES HAVE A VOLUME SCALE IN MILLILITERS ON LEFT-HAND SIDE



CALIBRATION SCALE ILLUSTRATION

GAUGES WITH CPVC / A20 / HC END PLATES AND ALL PSG-31440 GAUGES ARE NOT SUPPLIED WITH A VENT TUBE CONNECTOR



GAUGES WITHOUT VENT TUBE CONNECTOR

PSG-30,000 SERIES AccuRate® PUMP SETTING GAUGE SPECIFICATIONS

GAUGE MODEL NUMBER	MAXIMUM PUMPING RATE (BASED ON A 1 MINUTE TEST)				GAUGE VOLUME			INLET PORT SIZE**	VENT PORT SIZE*	OVERALL GAUGE LENGTH	END PLATE OUTSIDE DIAMETER
	GPD	GPH	LPD	LPH	ML	GBV	LBV				
PSG-30016	16	0.67	60.57	2.52	42.06	0.01	0.04	1/4" NPT	1/4" NPT	18-5/16"	2-1/2"
PSG-30030	30	1.25	113.56	4.73	78.86	0.02	0.08	1/4" NPT	1/4" NPT	15-11/32"	2-1/2"
PSG-30060	60	2.50	227.12	9.46	157.73	0.04	0.16	1/2" NPT	1/4" NPT	17-1/2"	2-1/2"
PSG-30096	96	4.00	363.40	15.14	252.36	0.07	0.25	1/2" NPT	1/4" NPT	17-21/32"	3"
PSG-30144	144	6.00	545.10	22.71	378.54	0.10	0.38	1/4" NPT	1/4" NPT	14-1/4"	3-1/2"
PSG-30216	216	9.00	817.65	34.07	567.81	0.15	0.57	1/2" NPT	1/4" NPT	15-5/16"	4"
PSG-30280	280	11.67	1059.92	44.16	736.05	0.19	0.74	1/2" NPT	1/4" NPT	15-17/32"	4"
PSG-30420	420	17.50	1589.87	66.24	1104.08	0.29	1.10	1/2" NPT	1/4" NPT	15-15/32"	4-1/2"
PSG-30580	580	24.17	2195.54	91.48	1524.68	0.40	1.52	3/4" NPT	1/4" NPT	15-21/32"	5"
PSG-30700	700	29.17	2649.79	110.41	1840.13	0.49	1.84	3/4" NPT	1/4" NPT	15-5/16"	5-1/2"
PSG-31440	1440	60.00	5450.99	227.12	3785.41	1.00	3.79	1" NPT	1" NPT	16-7/16"	7"

*Model PSG-31440 and gauges constructed with CPVC / A20 / HC end plates are not supplied with a vent tube connector.

Note: 3/8" OD tube x 1/4" NPT vent tube connector is 316 S.S. on gauges with S6 end plates and polypropylene on gauges with PVC end plates.

**Inlet port sizes and types shown are standard, but other sizes and types, such as flanged, are available upon request.

ORDERING SYSTEM

PSG-30,000 Series AccuRate® Pump Setting Gauge

REQUESTED BY: _____ COMPANY: _____

ADDRESS: _____ CITY: _____ STATE: _____ ZIP: _____

PHONE: _____ FAX: _____ EMAIL: _____



Gauge Model Number

- PSG-30016 PSG-30280
- PSG-30030 PSG-30420
- PSG-30060 PSG-30580
- PSG-30096 PSG-30700
- PSG-30144 PSG-31440
- PSG-30216

End Plate Material

- S6 = 316 Stainless Steel
- P = PVC
- C = CPVC
- A20 = Alloy 20
- HC = Hastelloy C-276
- Other (Please specify above)

Gasket Material

- T = PTFE Envelope with Fluorocarbon Filler

Calibration Scale

- GPD = Gallons Per Day
- GPH = Gallons Per Hour
- LPD = Liters Per Day
- LPH = Liters Per Hour
- GBV = Gallons By Volume
- LBV = Liters By Volume

• Example Order Number: PSG-30016-S6-T-LPH

• Please contact Kenco to request a quote for options not covered by gauge specifications shown above.

CALIBRATION POTS

CALIBRATION POTS FOR CALIBRATING CHEMICAL PUMPS

APPLICATIONS:

The Calibration Pot provides a means to accurately and precisely check the feed rate of a chemical metering pump and can also be used as the primary containment vessel. There are many sizes available to accommodate a wide range of flow rates. Give us your design criteria and we will customize a unit to fit your needs.

OPERATING PRINCIPLE:

The unit is installed between the suction side of the chemical metering pump and the chemical storage tank. The flow rate is checked by closing the valve between the storage tank and the Calibration Pot and observing the liquid level change on the calibrated scale for one minute.

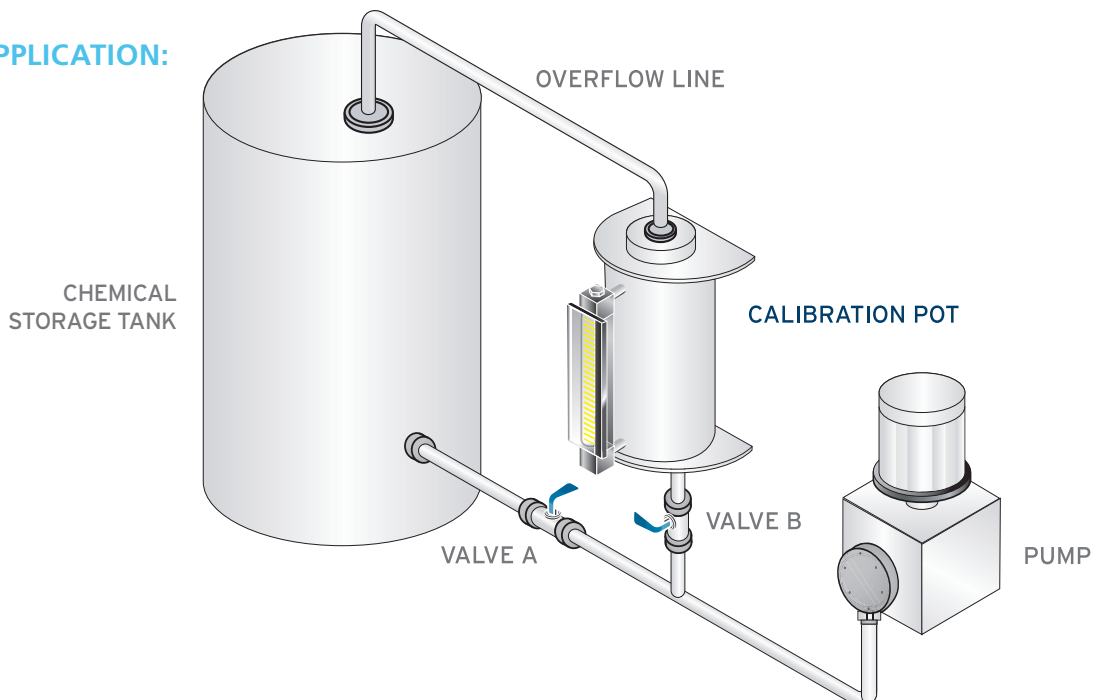
FEATURES:

- The Kenco Calibration Pot is often the preferred option for offshore installations due to the robust design. The totally enclosed construction ensures maximum safety.
- Standard construction options are 316 Stainless Steel, Hastelloy C-276, Alloy 20 and Painted Carbon Steel. Other materials such as PVC and CPVC are available.
- Sight tube is glass, but other materials can be substituted.
- A wide variety of seal material options are available to meet your chemical resistance needs.
- Standard Calibration Pot sizes cover a broad range of flow rates from 2.5 Gallons per Hour (9.46 Liters per Hour) to 620 Gallons per Hour (2346.95 Liters per Hour).
- Six standard calibrated scale options are available: Gallons per Hour (GPH), Gallons per Day (GPD), Liters per Hour (LPH), Liters per Day (LPD), U.S. Gallons by Volume (GBV) and Liters by Volume (LBV). Other scale units available upon request.
- Rate scales are based on a one minute test, but we can accommodate other test times as well.
- Scales are individually calibrated to assure maximum accuracy.
- Scales are engraved on a clear polycarbonate sight tube shield for maximum impact resistance.
- Scales have engraved lines and characters filled with yellow enamel that is highly visible and easy to read against all liquids.
- Standard connections are FNPT or Flanged, but we can accommodate for any size or type of connection desired.

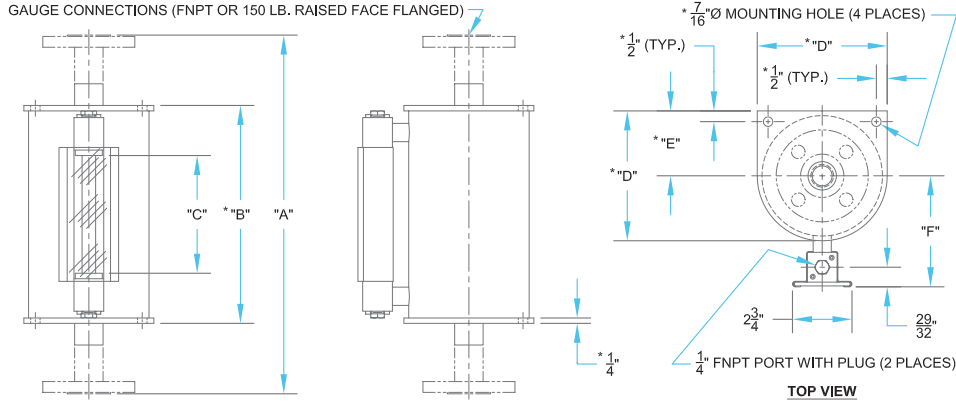


CALIBRATION POTS AVAILABLE WITH FLANGED OR THREADED CONNECTIONS

COMMON APPLICATION:



CALIBRATION POTS



CALIBRATION POT SPECIFICATIONS

MODEL NUMBER (CONNECTION SIZE)		MAXIMUM PUMPING RATE (BASED ON A 1 MINUTE TEST)				VOLUME		A		* B	C	* D	* E	F
THREADED	FLANGED	GPH	GPD	LPH	LPD	GBV	LBV	FNPT	FLGD.					
15842 (3/4" FNPT)	15843 (3/4" 150#)	2.5	60	9.46	227.12	0.04	0.16	21-7/8"	24-3/8"	N/A	15-3/4"	N/A	N/A	2-7/8"
15844 (3/4" FNPT)	15845 (3/4" 150#)	5	120	18.93	454.25	0.08	0.32	27-1/8"	29-5/8"	N/A	21"	N/A	N/A	3"
15846 (3/4" FNPT)	15847 (3/4" 150#)	10	240	37.85	908.5	0.17	0.63	26-1/8"	30-5/8"	24-1/8"	19-1/2"	2-3/8"	1-3/16"	3-9/32"
15848 (1" FNPT)	15849 (1" 150#)	20	480	75.71	1816.99	0.33	1.26	24-1/4"	28-3/8"	21-7/8"	17-1/4"	3-1/4"	1-5/8"	3-25/32"
15850 (1" FNPT)	15851 (1" 150#)	40	960	151.42	3633.98	0.67	2.52	29-1/2"	33-5/8"	27-1/8"	22-1/2"	3-7/8"	1-15/16"	4-3/32"
15852 (1" FNPT)	15853 (1" 150#)	60	1440	227.12	5450.98	1	3.79	27"	31-1/8"	24-5/8"	20"	4-7/8"	2-7/16"	4-19/32"
15854 (1-1/2" FNPT)	15855 (1-1/2" 150#)	80	1920	302.83	7267.97	1.33	5.05	23-1/4"	26-5/8"	20-1/8"	15-1/2"	6"	3"	5-1/8"
15856 (1-1/2" FNPT)	15857 (1-1/2" 150#)	100	2400	378.54	9084.96	1.67	6.31	27-1/4"	30-5/8"	24-1/8"	19-1/2"	6"	3"	5-1/8"
15858 (2" FNPT)	15859 (2" 150#)	120	2880	454.25	10901.95	2	7.57	25-1/2"	28-5/8"	22-1/8"	17-1/2"	7"	3-1/2"	5-21/32"
15860 (2" FNPT)	15861 (2" 150#)	140	3360	529.96	12718.94	2.33	8.83	28-1/2"	31-5/8"	25-1/8"	20-1/2"	7"	3-1/2"	5-21/32"
15862 (2" FNPT)	15863 (2" 150#)	280	6720	1059.91	25437.89	4.67	17.67	30-7/8"	34"	27-1/2"	22-7/8"	9"	4-1/2"	6-21/32"
15864 (2" FNPT)	15865 (2" 150#)	440	10560	1665.58	39973.82	7.33	27.76	30-5/8"	33-3/4"	27-1/4"	22-5/8"	11-1/8"	5-9/16"	7-23/32"
15866 (2" FNPT)	15867 (2" 150#)	620	14880	2346.95	56326.75	10.33	39.12	30-1/4"	33-3/8"	26-7/8"	22-1/4"	13-1/8"	6-9/16"	8-23/32"

*Model number 15842 through 15845 gauges are not equipped with end plates. Model number 15846 through 15851 gauges are equipped with 1/4" thick end plates, but they are round and do not have 7/16" \varnothing mounting holes. See Kenco website for a detailed outline drawing of each model.

ORDERING SYSTEM Calibration Pots

REQUESTED BY: _____ COMPANY: _____

ADDRESS: _____ CITY: _____ STATE: _____ ZIP: _____

PHONE: _____ FAX: _____ EMAIL: _____

Calibration Pot Model Number

15842 15849 15856 15863
 15843 15850 15857 15864
 15844 15851 15858 15865
 15845 15852 15859 15866
 15846 15853 15860 15867
 15847 15854 15861
 15848 15855 15862

Material of Construction

CS = Carbon Steel
 SS = 316 Stainless Steel
 HC = Hastelloy C-276
 A20 = Alloy 20
 Other (please specify above)

Seal Material

A = Aflas
 B = Buna-N
 E = Ethylene Propylene
 V = Fluorocarbon
 T = FEP Encapsulated Silicone
 K = Kalrez 4079
 Other (please specify above)

Calibration Scale

GPH = Gallons Per Hour
 GPD = Gallons Per Day
 LPH = Liters Per Hour
 LPD = Liters Per Day
 GBV = Gallons By Volume
 LBV = Liters By Volume
 Other (please specify above)

- Example Order Number: 15842-SS-V-GPH
- Please contact Kenco to request a quote for options not covered by gauge specifications shown above.

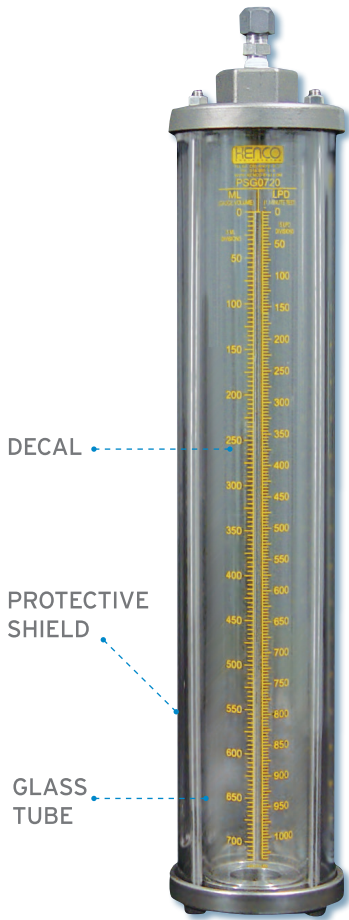
PRECISION PUMP SETTING GAUGES

APPLICATIONS:

Kenco AccuRate® Pump Setting Gauges utilize precision scientific glass to provide the most accurate reading possible for calibrating the flow rate of a chemical metering pump. They are also used to periodically monitor the performance and accuracy of a chemical injection system. The AccuRate® gauge can also be used as the primary containment reservoir of a liquid that will be pumped into a chemical injection system.

OPERATING PRINCIPLE:

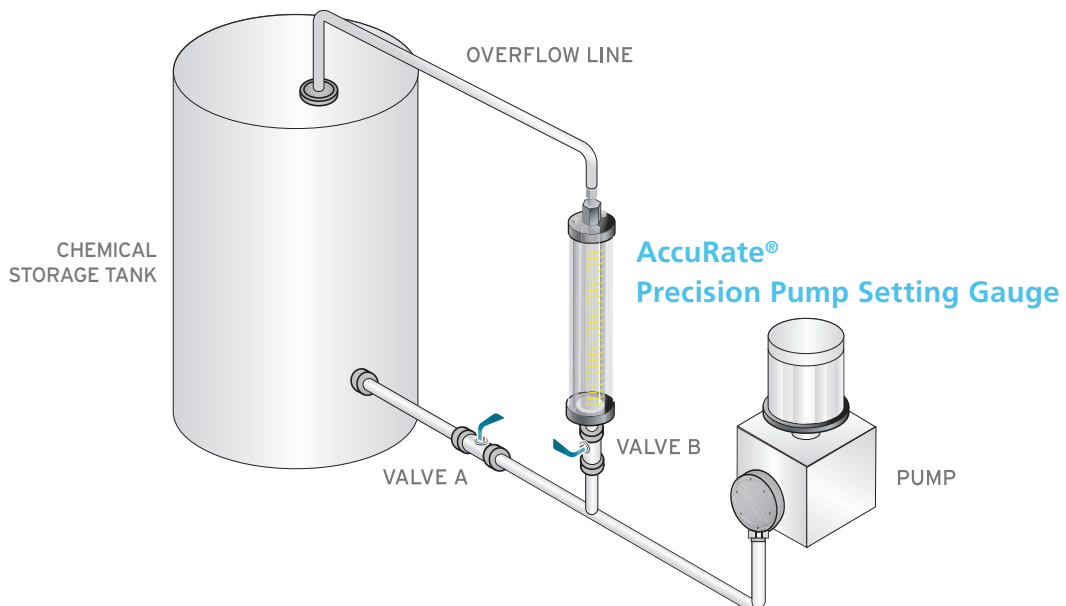
To check the flow rate of a chemical pump, isolate the chemical in the storage tank from the AccuRate® Gauge. Keep the isolation valve closed and observe the number of scale markings the liquid level passes in one minute. This will give you the actual chemical pump flow rate. If the rate is not the one desired, make an adjustment to the chemical metering pump feed rate and conduct as many one minute tests as necessary to achieve the chemical feed rate desired. The AccuRate® sight tube has a decal with (2) calibrated scales. The scale on the left side is a volume scale in milliliters (ML). In a one minute test, the scale will read the pump rate in milliliters per minute. The scale on the right side will depend on the desired flow rate unit of measure; i.e. Gallons per Day (GPD), Gallons per Hour (GPH), Liters per Day (LPD), Liters per Hour (LPH), U.S. Gallons by Volume (GBV) or Liters by Volume (LBV).



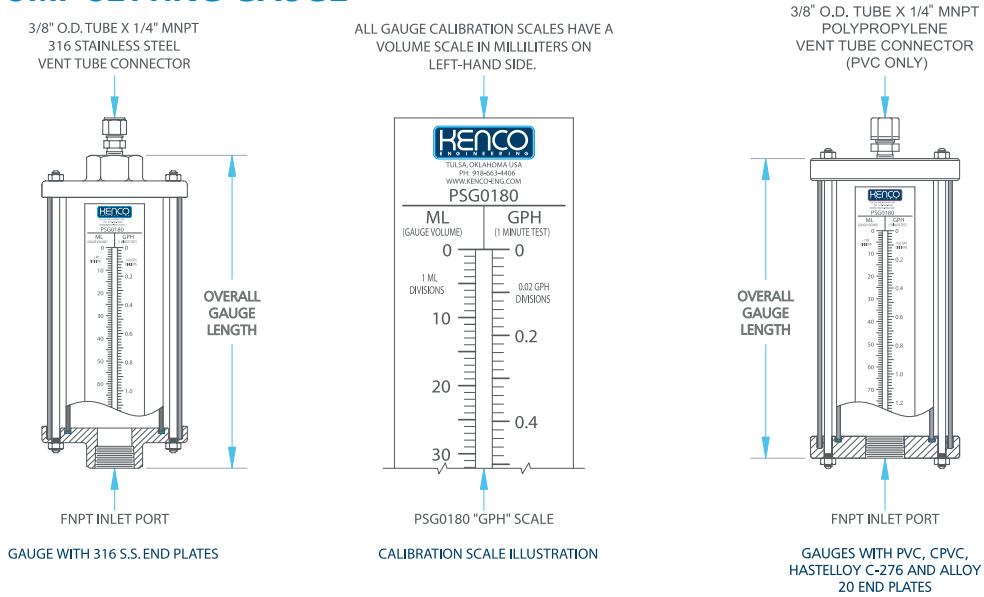
FEATURES:

- Precision borosilicate glass sight tubes with extremely tight inside diameter tolerance delivers highly accurate rate calibrations.
- AccuRate® Pump Setting Gauges will calibrate pump rates from 1.58 Gallons Per Hour (6 Liters Per Hour) to 45.6 Gallons Per Hour (172 Liters Per Hour).
- Clear polycarbonate shield for high impact resistance is standard.
- Five (5) scale options are available: U.S. Gallons By Volume (USG), Gallons Per Day (GPD), Gallons Per Hour (GPH), Liters Per Day (LPD) and Liters Per Hour (LPH). Volumetric scale in Milliliters (ML) is standard on all units.
- A 3/8" O.D. tube x 1/4" MNPT tubing connector is supplied on top of units with 316 Stainless Steel and PVC end plates. Connector is 316 Stainless Steel on units with 316 Stainless Steel end plates and Polypropylene on units with PVC end plates.
- Standard end plate materials are 316 Stainless Steel, Hastelloy C-276, Alloy 20, PVC and CPVC. Other materials are available upon request.
- Drain holes in lower end plate eliminate condensation.
- Redline tape can be applied to the glass tube for better visibility of clear liquids. The redline tape will magnify visibility in the portion of the glass tube that contains liquid.

COMMON APPLICATION:



AccuRate® PUMP SETTING GAUGE



AccuRate® PUMP SETTING GAUGE SPECIFICATIONS

GAUGE MODEL NUMBER	END PLATE MATERIAL	GAUGE VOLUME		MAXIMUM PUMPING RATE (BASED ON A 1 MINUTE TEST)				INLET PORT SIZE*	OVERALL GAUGE LENGTH	END PLATE O.D.
		ML	USG	GPH	GPD	LPH	LPD			
PSG0100	S	100	0.0264	1.58	38	6	144	1/2"	12-7/8"	2-7/8"
	P / CP / HC / A20								11-5/8"	3"
PSG0180	S	180	0.0476	2.84	68.5	10.8	258	1/2"	19-1/16"	2-7/8"
	P / CP / HC / A20								17-13/16"	3"
PSG0404	S	404	0.107	6.4	154	24.3	580	3/4"	19-1/16"	3-3/8"
	P / CP / HC / A20								17-13/16"	3-1/2"
PSG0720	S	720	0.19	11.4	274	43.2	1035	1"	19-1/16"	3-7/8"
	P / CP / HC / A20								17-13/16"	4"
PSG1620	S	1620	0.428	25.6	615	97	2330	1"	19-1/16"	4-7/8"
	P / CP / HC / A20								17-13/16"	5"
PSG2880	S	2880	0.76	45.6	1095	172	4140	1"	19-1/16"	5-7/8"
	P / CP / HC / A20								17-13/16"	6"

*Inlet port sizes and types shown are standard, but other sizes and types, such as flanged, are available upon request.

ORDERING SYSTEM

AccuRate® Pump Setting Gauge

REQUESTED BY: _____ COMPANY: _____
 ADDRESS: _____ CITY: _____ STATE: _____ ZIP: _____
 PHONE: _____ FAX: _____ EMAIL: _____

Gauge Model Number

PSG0100
 PSG0180
 PSG0404
 PSG0720
 PSG1620
 PSG2880

* End Plate Material

S = 316 Stainless Steel
 P = PVC
 CP = CPVC
 HC = Hastelloy C-276
 A20 = Alloy 20
 Other (Please specify above)

Gasket Material

A = Aflas
 B = Buna-N
 E = Ethylene Propylene
 V = Fluorocarbon
 T = PTFE Envelope w/
 Neoprene Filler
 Other (please specify above)

Calibration Scale

USG = U.S. Gallons by Volume
 GPH = Gallons Per Hour
 GPD = Gallons Per Day
 LPH = Liters Per Hour
 LPD = Liters Per Day

- Example Order Number: PSG0180-S-V-GPH
- Please contact Kenco to request a quote for options not covered by gauge specifications shown above.
- For a Redline glass strip, add - RL to end of part number.
- * Gauges constructed with end plate material options CP, HC and A20 supplied without tube connector fitting.

DRAW DOWN CALIBRATION CYLINDER

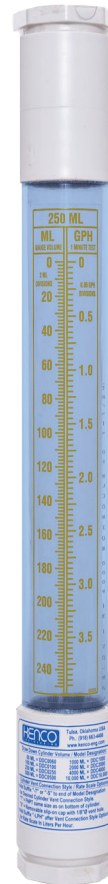
PUMP SETTING GAUGES

APPLICATIONS:

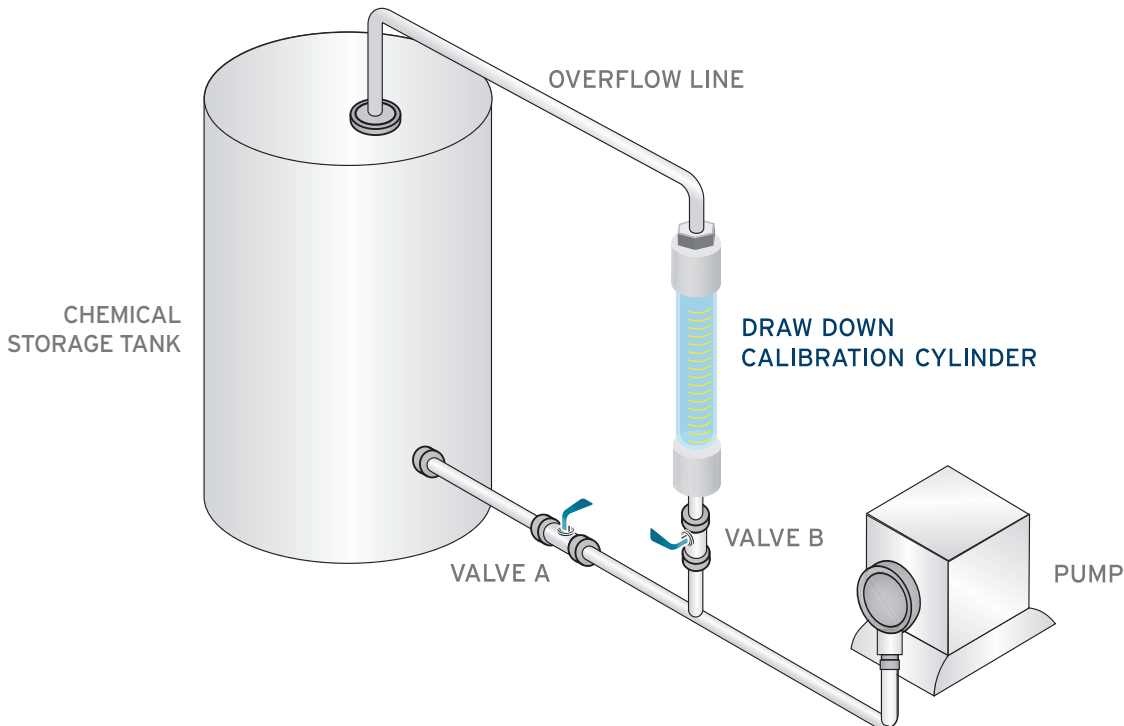
- To calibrate the flow rate of chemical metering pumps and chemical injection systems
- To periodically monitor the performance and accuracy of a chemical injection system
- To insert accurate dosages of chemical into batch processes

FEATURES:

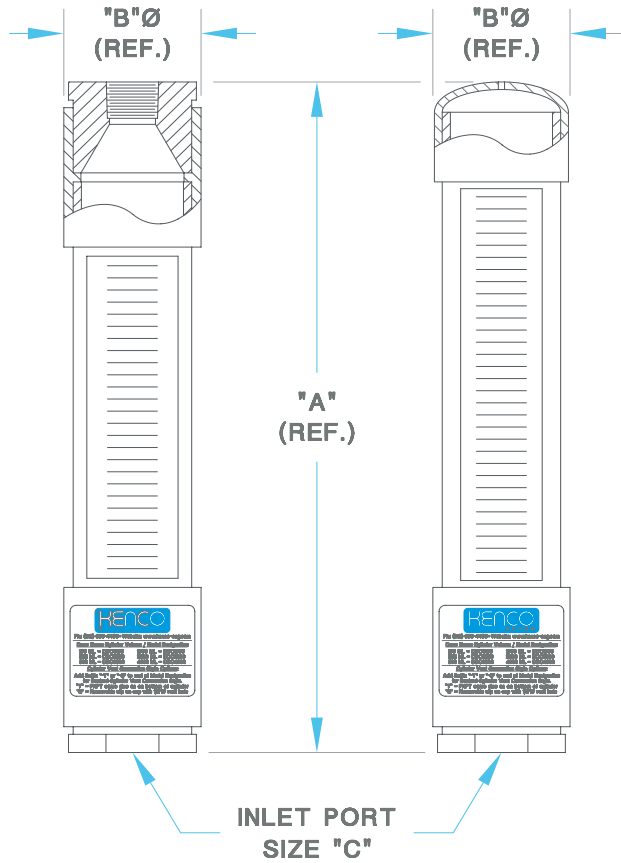
- Dual Scale:
 1. Total gauge volume in milliliters (ML)
 2. Gallons per Hour or Liters per Hour for a one minute test of calibration to determine the flow rate
- Polyester laminated scales are protected from attack by harsh chemicals
- Available in capacities ranging from 60 ML up to 10,000 ML size
- Models with threaded NPT connections on both ends and models with removable slip on top caps available
- Rugged construction using transparent PVC pipe and industrial grade PVC fittings
- Sight tube is impact resistant superior grade PVC
- Materials of construction are qualified to handle a wide range of chemicals
- Other connection types and connection sizes available



COMMON APPLICATION



DRAW DOWN CALIBRATION CYLINDER



DRAW DOWN CALIBRATION CYLINDER SPECIFICATIONS

GAUGE MODEL NUMBER		GAUGE VOLUME	MAXIMUM PUMP RATE		VOLUME / RATE SCALE DIVISIONS			"A"		"B"	"C"
FEMALE NPT	SLIP-ON CAP	ML	GPH	LPH	ML	GPH	LPH	FEMALE NPT	SLIP ON CAP		
DDC0060-T	DDC0060-S	60	0.951	3,600	0.5	0.01	0.05	13 3/4"	12 11/16"	1 5/16"	1/4" FNPT
DDC0060-T-LPH	DDC0060-S-LPH										
DDC0100-T	DDC0100-S	100	1.585	6	1	0.02	0.05	14 3/8"	13 5/16"	1 5/8"	1/2" FNPT
DDC0100-T-LPH	DDC0100-S-LPH										
DDC0250-T	DDC0250-S	250	3.963	15	2	0.05	0.10	15 3/4"	14 7/16"	2 1/4"	1/2" FNPT
DDC0250-T-LPH	DDC0250-S-LPH										
DDC0500-T	DDC0500-S	500	7.925	30	5	0.10	0.25	17 13/16"	16 3/8"	2 3/4"	3/4" FNPT
DDC0500-T-LPH	DDC0500-S-LPH										
DDC1000-T	DDC1000-S	1000	15.850	60	5	0.10	0.25	27 1/16"	25 5/8"	2 3/4"	3/4" FNPT
DDC1000-T-LPH	DDC1000-S-LPH										
DDC2000-T	DDC2000-S	2000	31.700	120	20	0.25	1	21 1/4"	19 7/16"	5"	2" FNPT
DDC2000-T-LPH	DDC2000-S-LPH										
DDC4000-T	DDC4000-S	4000	63.401	240	20	0.25	1	31"	29 3/16"	5"	2" FNPT
DDC4000-T-LPH	DDC4000-S-LPH										
DDC10,000-T	DDC10,000-S	10,000	158.503	600	100	2	5	36 7/8"	33 7/8"	7 1/4"	2" FNPT
DDC10,000-T-LPH	DDC10,000-S-LPH										

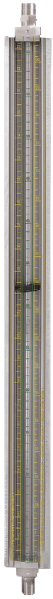
Notes:

1. Calibration scale on gauge models with "-T" and "-S" suffix are in Milliliters by volume and Gallons Per Hour based on a one minute test.
2. Calibration scale on gauge models with "-T-LPH" and "-S-LPH" suffix are in Milliliters by volume and Liters Per Hour based on a one minute test.
3. Other gauge sizes are available. Please contact Kenco to request a quote for options not covered by gauge specifications shown above.
4. Female NPT Vent on "-T" is the same as inlet port size "C".
5. Slip-On Cap on "-S" model is removable and has a 1/8" diameter vent hole through center.
6. Maximum Pump Rates and Rate Scale Divisions in Gallons per Hour and Liters per Hour are based on a one minute test.

5700 / 7000 / 17000 SERIES

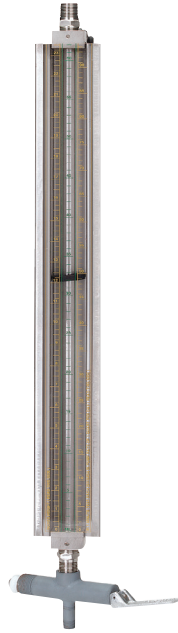
INJECTION RATE GAUGES

5700 RATE GAUGE WITH 1/2" CONNECTIONS

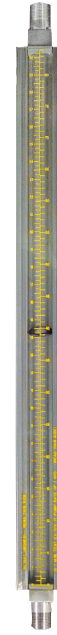


5700 Rate Gauge with Optional Flange Connection

7000 RATE GAUGE WITH 3/4" TEST VALVE CONNECTION



17000 RATE GAUGE WITH 1" CONNECTIONS



APPLICATIONS:

5700, 7000 and 17000 Rate Gauges provide a visual means for tank level indication and calibrating the pump rate of a chemical metering pump. They are ideal for level indication and pump calibration needs on portable IBC chemical storage tanks. Gauges can be ordered in whatever length is required to fit the height of your storage tank or meet your chemical metering pump calibration needs. Gauges operate in low to medium pressure applications.

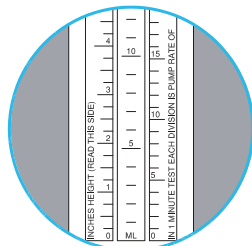
OPERATING PRINCIPLE:

The injection rate of a chemical metering pump is checked by closing a valve between the gauge and the chemical storage tank and observing the change in liquid height in one minute. Using the rate scale on the front of the polycarbonate shield, count the number of marks the liquid level passed during the one minute test period. This will give you the actual chemical pump rate. If the rate is not the one desired, make an adjustment to the chemical pump feed rate and conduct as many one minute tests necessary to set the chemical pump to the rate desired.

FEATURES:

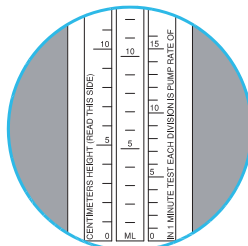
- 5700 Series Rate Gauge has 1/2" MNPT x 3/8" FNPT connections on each end, but flanged connections are also available. The standard sight tube is 5/8" O.D. glass. Other sight tube materials are available upon request.
- 7000 Series Rate Gauge is a 5700 Rate Gauge equipped with a spring-loaded test valve on lower end to isolate the chemical storage tank from the gauge for quick and easy chemical metering pump calibration.
- 17000 Series Rate Gauge has 1" MNPT connections on each end, but flanged connections are also available. The standard sight tube is 1" O.D. glass, which makes it ideal for viscous liquids.
- The armored design of each gauge offers maximum protection for the sight tube from mechanical impact. Three sides of the gauge are protected with a metal frame, while the face of the gauge is protected by an impact resistant clear polycarbonate shield.
- Sight tube shield can be custom calibrated to read tank volume or any other desired calibration.
- A wide variety of wetted materials are available to ensure compatibility with most any liquid.
- For mounting purposes, a mounting lug is welded to the back of the gauge.

SILK SCREENED RATE SCALES AND CUSTOM ENGRAVED SCALES:



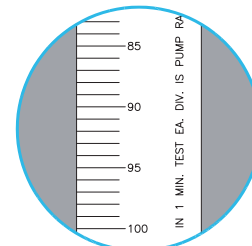
"RH"

Silk screened rate/height shield calibrated in quarts per day, milliliters per minute and height in inches



"MRH"

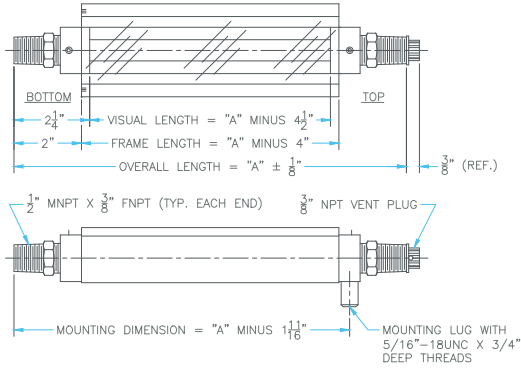
Silk screened metric rate/height shield calibrated in liters per day, milliliters per minute and height in centimeters



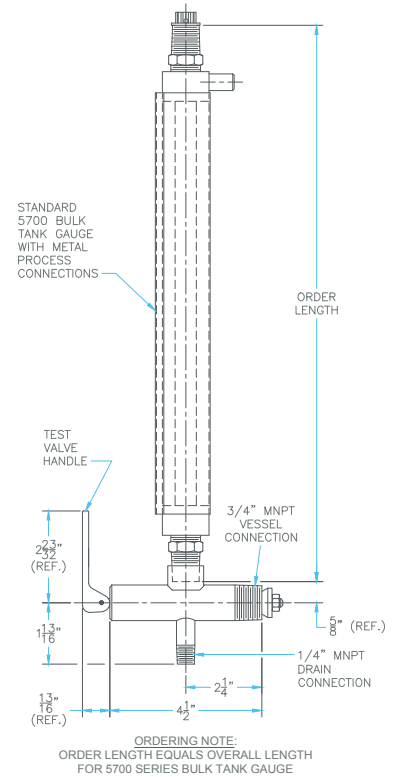
"S"

Custom engraved shield with scale(s) to meet your application requirements (tank volume, percent, etc.)

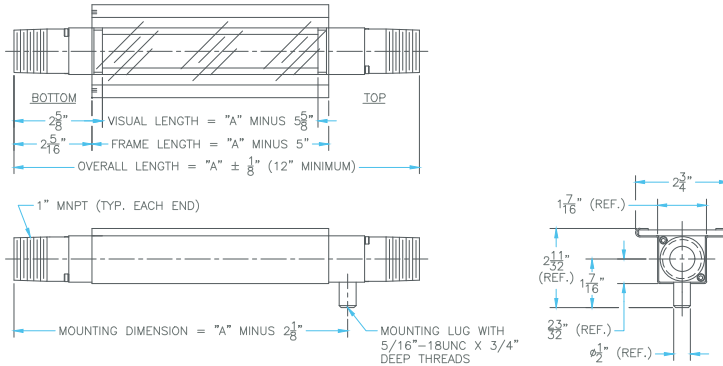
5700 INJECTION RATE GAUGE



7000 INJECTION RATE GAUGE



17000 INJECTION RATE GAUGE



ORDERING SYSTEM

5700, 7000 & 17000 Injection Rate Gauges

REQUESTED BY: _____ COMPANY: _____

ADDRESS: _____ CITY: _____ STATE: _____ ZIP: _____

PHONE: _____ FAX: _____ EMAIL: _____

Gauge Style	Flange Option	Overall Length of Gauge (Inches)	Material of Construction*	Seal Material
5700 = Gauge w/ 1/2" MNPT Connections	N = None (Leave Blank)		C = Zinc Plated Carbon Steel	V = Fluorocarbon
17000 = Gauge w/ 1" MNPT Connections	FL50 = 1/2" 150# Flange		A = Stainless Steel	A = Aflas
7000 = Gauge w/ 1/2" MNPT Connections & Test Valve with 3/4" & 1/4" MNPT Connections	FL75 = 3/4" 150# Flange		W = 316 Stainless Steel Wetted Parts w/Carbon Steel Frame	B = Buna-N
• Flange not available for 7000 gauge	FL1.0 = 1" 150# Flange		PC = PVC Wetted Parts w/Carbon Steel Frame	T = (5700/7000) PTFE (17000) FEP Encapsulated Silicone
	FL1.5 = 1 1/2" 150# Flange		PS = PVC Wetted Parts w/Stainless Steel Frame	E = Ethylene Propylene
	Other (please specify above)		Other (please specify above)	K = Kalrez 4079 (5700 & 17000 Only)
			• For flanged models, select options C, A, PC or PS only	• "T" seals on gauges with "PC" and "PS" options are FEP Encapsulated Silicone
Shield Options**	Sight Tube Options***	Maximum Working Pressure (PSIG)	Maximum Operating Temperature (°F)	Steam
L = Clear Polycarbonate	GS = 5/8" O.D. Glass (5700/7000)			S = Steam Application
H = Height Scale	1" O.D. Glass (17000)			NS = Non-Steam Application
RH = Rate Height Scale	RL = 5/8" O.D. Redline Glass (5700)			
MH = Metric Height Scale	1" O.D. Redline Glass (17000)			
MRH = Metric Rate Height Scale				

• Example Order Number: 5700-52-ATRH-GS-ATM-110-NS

* PC & PS option not available on 7000 series injection rate gauge

** See page 10 or visit www.kenco-eng.com for shield descriptions

*** Based on application data provided, Kenco will select the appropriate sight tube material, i.e. high pressure glass.

929 SERIES

PUMP SETTING GAUGES



ADJUSTABLE STAINLESS STEEL GAUGE MARKERS



MODEL 929-1-S

929-1-S FEATURES/OPERATING PRINCIPLE:

Gauge mounts in suction line between reservoir and chemical pump and allows you to accurately calibrate pump to the desired amount of chemical to be injected. It provides a visual indication of liquid in the reservoir as well as a rapid means for setting the chemical pump. Rate scale on left side is marked and labeled in quarts per day and rate scale on right side is marked and labeled in liters per day.

929-1-S-MRH FEATURES:

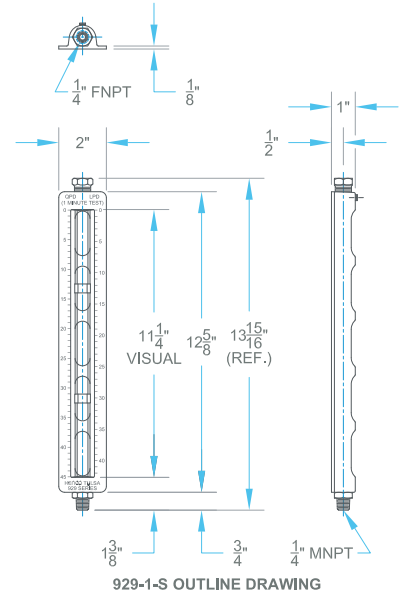
Same as 929-1-S except with a clear polycarbonate sight tube shield with silk screened Metric Rate and Height scales. Scales are in Centimeters, Milliliters and Liters Per Day based on a one minute test.

929-2 FEATURES:

Same as 929-1-S except lower gauge connection is a 1/4" quick-disconnect plug meeting industrial interchangeability requirements. This allows gauge to be easily moved to various quick-disconnect coupler locations.



MODEL 929-1-S-MRH



929 PUMP SETTING GAUGE SPECIFICATIONS

MODEL NUMBER	BASIC MODEL DESCRIPTION	*MAXIMUM PUMP RATE	*RATE SCALE DIVISIONS	MOUNTING THREAD	VENT SIZE	WETTED METALS	SIGHT TUBE
929-1-S	GAUGE ONLY	45 QPD 42.59 LPD	1 QPD / 1 LPD	1/4" MNPT	1/4" FNPT	303 S.S.	GLASS
929-1-S-MRH			1 LPD / 1 ML				
929-1-S6	GAUGE ONLY		1 QPD / 1 LPD	1/4" MNPT	1/4" FNPT	316 S.S.	GLASS
929-1-S6-MRH			1 LPD / 1 ML				
929-2	929-1-S w/COUPLER PLUG		1 QPD / 1 LPD	1/4" CPLR. PLUG	1/4" FNPT	C.S. / 303 S.S.	GLASS
929-2-MRH			1 LPD / 1 ML				

*Maximum Pump Rates are based on a one minute test. Rate Scale Divisions in Quarts Per Day / Liters Per Day are based on a one minute test and Scale Divisions in Milliliters are based on gauge volume.

ORDERING SYSTEM

929 Pump Setting Gauges

REQUESTED BY: _____ COMPANY: _____

ADDRESS: _____ CITY: _____ STATE: _____ ZIP: _____

PHONE: _____ FAX: _____ EMAIL: _____

Model Number

929-1-S
929-1-S-MRH
929-1-S6
929-1-S6-MRH
929-2
929-2-MRH

O-ring Seal Material Options

A = Aflas (Leave Blank)
B = Buna-N
E = Ethylene Propylene
V = Fluorocarbon
T = PTFE

Represented by:

Kenco Sales Offices:

Headquarters

10001 E. 54th St.
Tulsa, OK 74146
phone 918.663.4406
fax 918.663.4480

www.kenco-eng.com
email: info@kenco-eng.com

Baton Rouge Office

11616 Industriplex, Suite 7
Baton Rouge, LA 70809
phone 225.755.1912
fax 225.755.1913

www.kenco-eng.com
email: kenco-la@kenco-eng.com

95198 (11-6-2024)

