

# CALIBRATION POTS

## CALIBRATION POTS FOR CALIBRATING CHEMICAL PUMPS

### APPLICATIONS:

Calibration Pots provide an extremely accurate reading of the pumps output for a wide range of flow rates. The unit is installed between the suction side of the chemical pump and the chemical storage tank. The flow rate is checked by closing the valve between the storage tank and the Calibration Pot and observing the liquid level change in the calibrated scale for one minute.

### FEATURES:

- The Calibration Pot is often the preferred option for offshore installations due to the robust design. The totally enclosed construction ensures maximum safety.
- Provide a means for accurately and precisely checking the feed rates of a chemical metering pump
- Individually hand calibrated to assure maximum accuracy

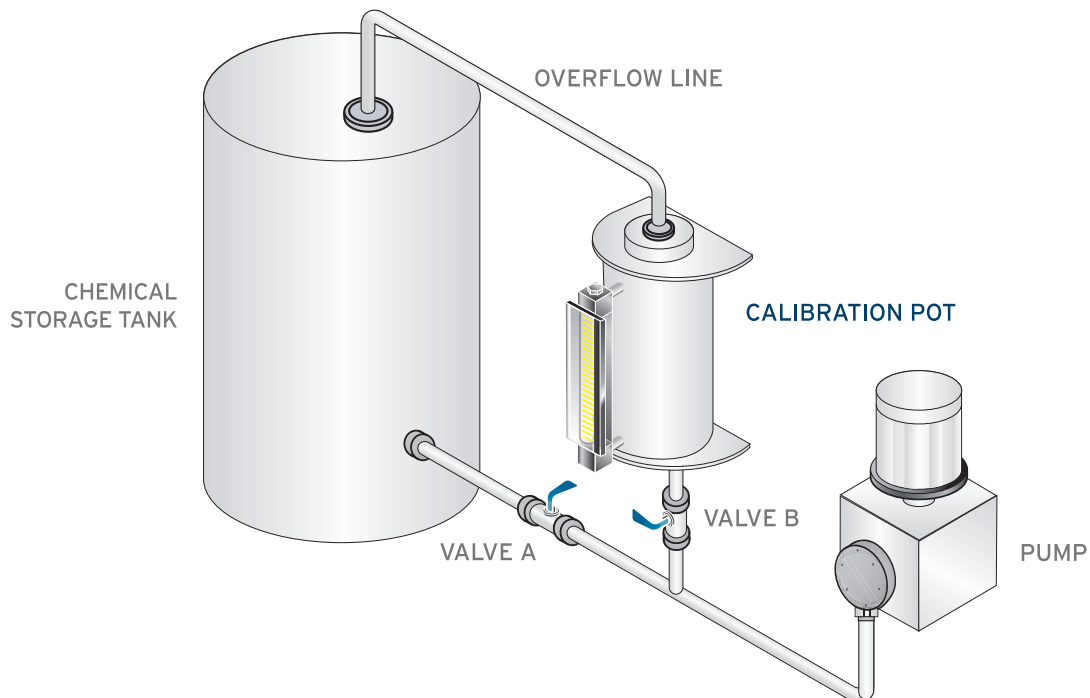
### OPTIONS:

- Manufactured in 316 Stainless Steel, Painted Carbon Steel, Hastelloy C-276 and Alloy 20 as standard options. Other materials including PVC and CPVC available to meet your chemical resistance requirements.
- Customization is always an option. Give us your design criteria and we will design a unit to fit your needs and specifications.

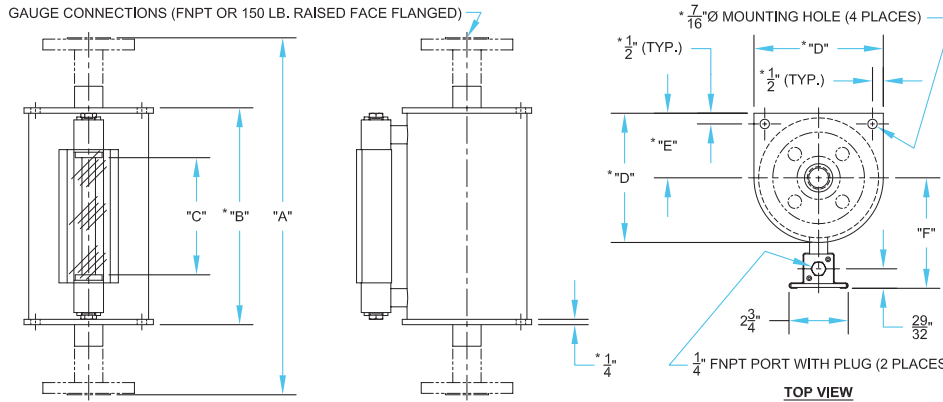


CALIBRATION POTS AVAILABLE WITH FLANGED OR THREADED CONNECTIONS

## COMMON APPLICATION



# CALIBRATION POTS



## CALIBRATION POT SPECIFICATIONS

MODEL NUMBER (CONNECTION SIZE)		MAXIMUM PUMPING RATE (BASED ON A 1 MINUTE TEST)				VOLUME		A		* B	C	* D	* E	F
THREADED	FLANGED	GPH	GPD	LPH	LPD	GBV	LBV	FNPT	FLGD.					
15842 (3/4" FNPT)	15843 (3/4" 150#)	2.5	60	9.46	227.12	0.04	0.16	21-7/8"	24-3/8"	N/A	15-3/4"	N/A	N/A	2-7/8"
15844 (3/4" FNPT)	15845 (3/4" 150#)	5	120	18.93	454.25	0.08	0.32	27-1/8"	29-5/8"	N/A	21"	N/A	N/A	3"
15846 (3/4" FNPT)	15847 (3/4" 150#)	10	240	37.85	908.5	0.17	0.63	26-1/8"	30-5/8"	24-1/8"	19-1/2"	2-3/8"	1-3/16"	3-9/32"
15848 (1" FNPT)	15849 (1" 150#)	20	480	75.71	1816.99	0.33	1.26	24-1/4"	28-3/8"	21-7/8"	17-1/4"	3-1/4"	1-5/8"	3-25/32"
15850 (1" FNPT)	15851 (1" 150#)	40	960	151.42	3633.98	0.67	2.52	29-1/2"	33-5/8"	27-1/8"	22-1/2"	3-7/8"	1-15/16"	4-3/32"
15852 (1" FNPT)	15853 (1" 150#)	60	1440	227.12	5450.98	1	3.79	27"	31-1/8"	24-5/8"	20"	4-7/8"	2-7/16"	4-19/32"
15854 (1-1/2" FNPT)	15855 (1-1/2" 150#)	80	1920	302.83	7267.97	1.33	5.05	23-1/4"	26-5/8"	20-1/8"	15-1/2"	6"	3"	5-1/8"
15856 (1-1/2" FNPT)	15857 (1-1/2" 150#)	100	2400	378.54	9084.96	1.67	6.31	27-1/4"	30-5/8"	24-1/8"	19-1/2"	6"	3"	5-1/8"
15858 (2" FNPT)	15859 (2" 150#)	120	2880	454.25	10901.95	2	7.57	25-1/2"	28-5/8"	22-1/8"	17-1/2"	7"	3-1/2"	5-21/32"
15860 (2" FNPT)	15861 (2" 150#)	140	3360	529.96	12718.94	2.33	8.83	28-1/2"	31-5/8"	25-1/8"	20-1/2"	7"	3-1/2"	5-21/32"
15862 (2" FNPT)	15863 (2" 150#)	280	6720	1059.91	25437.89	4.67	17.67	30-7/8"	34"	27-1/2"	22-7/8"	9"	4-1/2"	6-21/32"
15864 (2" FNPT)	15865 (2" 150#)	440	10560	1665.58	39973.82	7.33	27.76	30-5/8"	33-3/4"	27-1/4"	22-5/8"	11-1/8"	5-9/16"	7-23/32"
15866 (2" FNPT)	15867 (2" 150#)	620	14880	2346.95	56326.75	10.33	39.12	30-1/4"	33-3/8"	26-7/8"	22-1/4"	13-1/8"	6-9/16"	8-23/32"

\*Model number 15842 through 15845 gauges are not equipped with end plates. Model number 15846 through 15851 gauges are equipped with 1/4" thick end plates, but they are round and do not have 7/16" Ø mounting holes. See Kenco website for a detailed outline drawing of each model.

## ORDERING SYSTEM Calibration Pots

REQUESTED BY: \_\_\_\_\_ COMPANY: \_\_\_\_\_  
 ADDRESS: \_\_\_\_\_ CITY: \_\_\_\_\_ STATE: \_\_\_\_\_ ZIP: \_\_\_\_\_  
 PHONE: \_\_\_\_\_ FAX: \_\_\_\_\_ EMAIL: \_\_\_\_\_

### Cal Pot Model Number

15842 15849 15856 15863  
 15843 15850 15857 15864  
 15844 15851 15858 15865  
 15845 15852 15859 15866  
 15846 15853 15860 15867  
 15847 15854 15861  
 15848 15855 15862

### Material of Construction

CS = Carbon Steel  
 SS = 316 Stainless Steel  
 HC = Hastelloy C-276  
 A20 = Alloy 20  
 Other (please specify above)

### Seal Material

A = Aflas  
 B = Buna-N  
 E = Ethylene Propylene  
 V = Fluorocarbon  
 T = FEP Encapsulated Silicone  
 K = Kalrez 4079  
 Other (please specify above)

### Calibration Scale

GPH = Gallons Per Hour  
 GPD = Gallons Per Day  
 LPH = Liters Per Hour  
 LPD = Liters Per Day  
 GBV = Gallons By Volume  
 LBV = Liters By Volume  
 Other (please specify above)

- Example Order Number: 15842-SS-V-GPH
- Please contact Kenco to request a quote for options not covered by gauge specifications shown above.