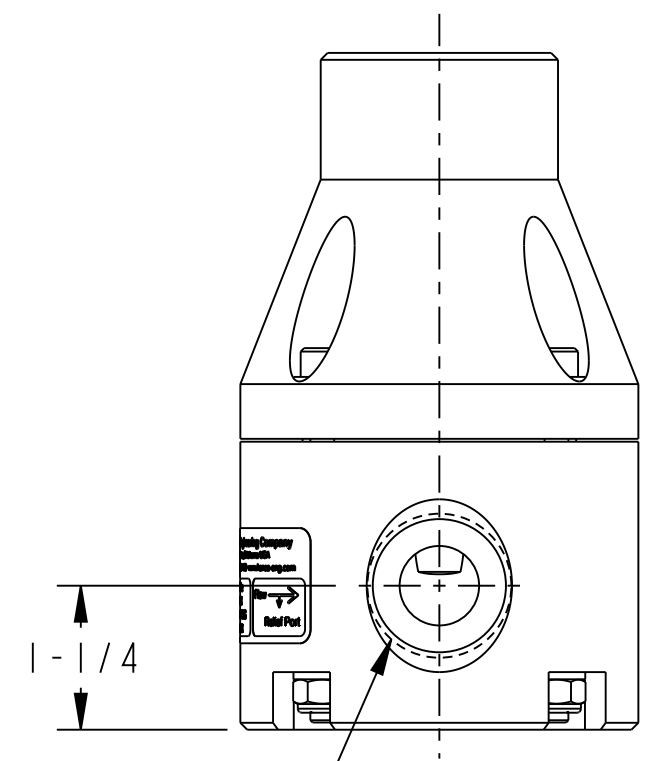
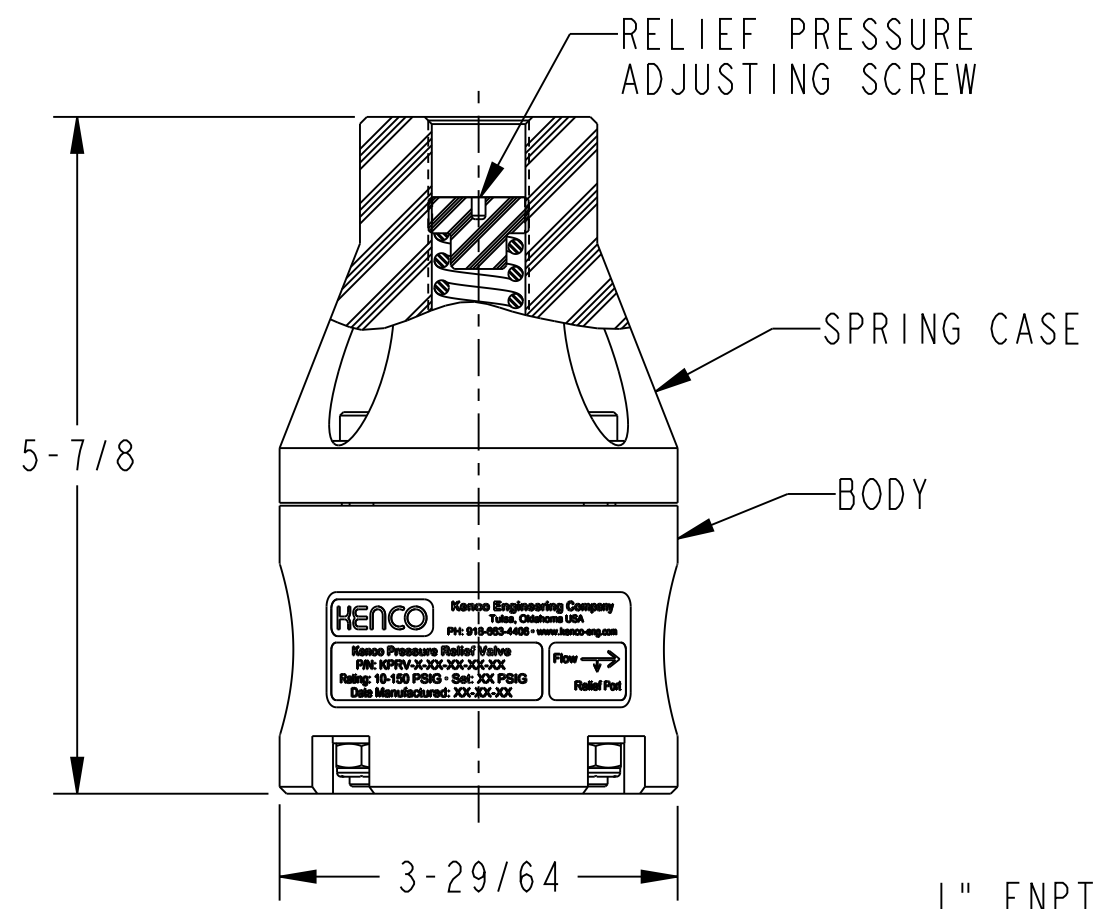


1" FNPT INLET PORT CONNECTION (STANDARD)  
(1" SOCKET WELD OPTIONAL)



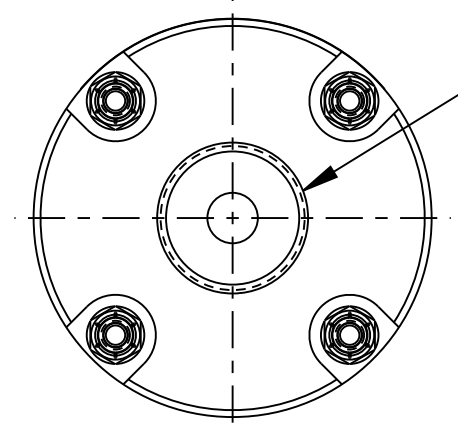
1" FNPT OUTLET PORT CONNECTION (STANDARD)  
(1" SOCKET WELD OPTIONAL)

RELIEF PRESSURE ADJUSTMENT RANGE: 0 TO 150 PSI  
RELIEF PRESSURE FACTORY SETTING: 50 PSI

WETTED MATERIALS:  
BODY: PVC  
DIAPHRAGM: TEFLON (WETTED)/EPDM (NON-WETTED)

NON-WETTED MATERIALS:  
SPRING CASE: PVC  
RELIEF PRESSURE ADJUSTING SCREW: PVC  
SPRING: ZINC PLATED SPRING STEEL  
NUTS, BOLTS & WASHERS: 18-8 STAINLESS STEEL

MODEL NUMBER:  
KPRV-T-10-P-P-TE (THREADED CONNECTIONS)  
KPRV-S-10-P-P-TE (SOCKET WELD CONNECTIONS)



1" FNPT RELIEF PORT CONNECTION (STANDARD)  
(1" SOCKET WELD OPTIONAL)

B	5/20/15	LR	REVISED TO SHOW CHANGE TO LABEL	DIM'S IN INCHES TOLERANCES UNLESS OTHERWISE SPECIFIED.		MATERIAL:	SEE B/M	
	N/A	BRC				RELEASE LEVEL:	RELEASED	
A	4/29/15	BRC	RELEASED	ANGULAR ±1/2° FRACTIONAL ±1/64" (X.X) ±0.015" (X.XX) ±0.010" (X.XXX) ±0.005" MACH FILLET RAD: .031" 125 MAX. FINISH, ALL MACHINED SURFACES.	ENGINEERING Tulsa, Oklahoma USA	DRAWING CREATED IN PRO/ENGINEER		
	N/A	KLM				TITLE:	VALVE, KPRV RELIEF, 1", BOLTED	
REV.	DATE	DRN.	DESCRIPTION	DRN. BY:	BRC	SCALE:	0.600	DRAWING NUMBER
	ECN	CHKD.		CHKD. BY:	KLM	REVISION:	B	
PROPRIETARY: THIS DRAWING AND THE INFORMATION CONTAINED HEREIN IS PROPRIETARY TO KENCO ENGINEERING CO. AND SHALL NOT BE REPRODUCED, COPIED, OR DISCLOSED IN WHOLE OR IN PART, OR USED FOR MANUFACTURE OR FOR ANY OTHER PURPOSE WITHOUT THE WRITTEN PERMISSION OF KENCO ENGINEERING.				DATE:	4/29/15	SHEET 1 OF 3	73459	