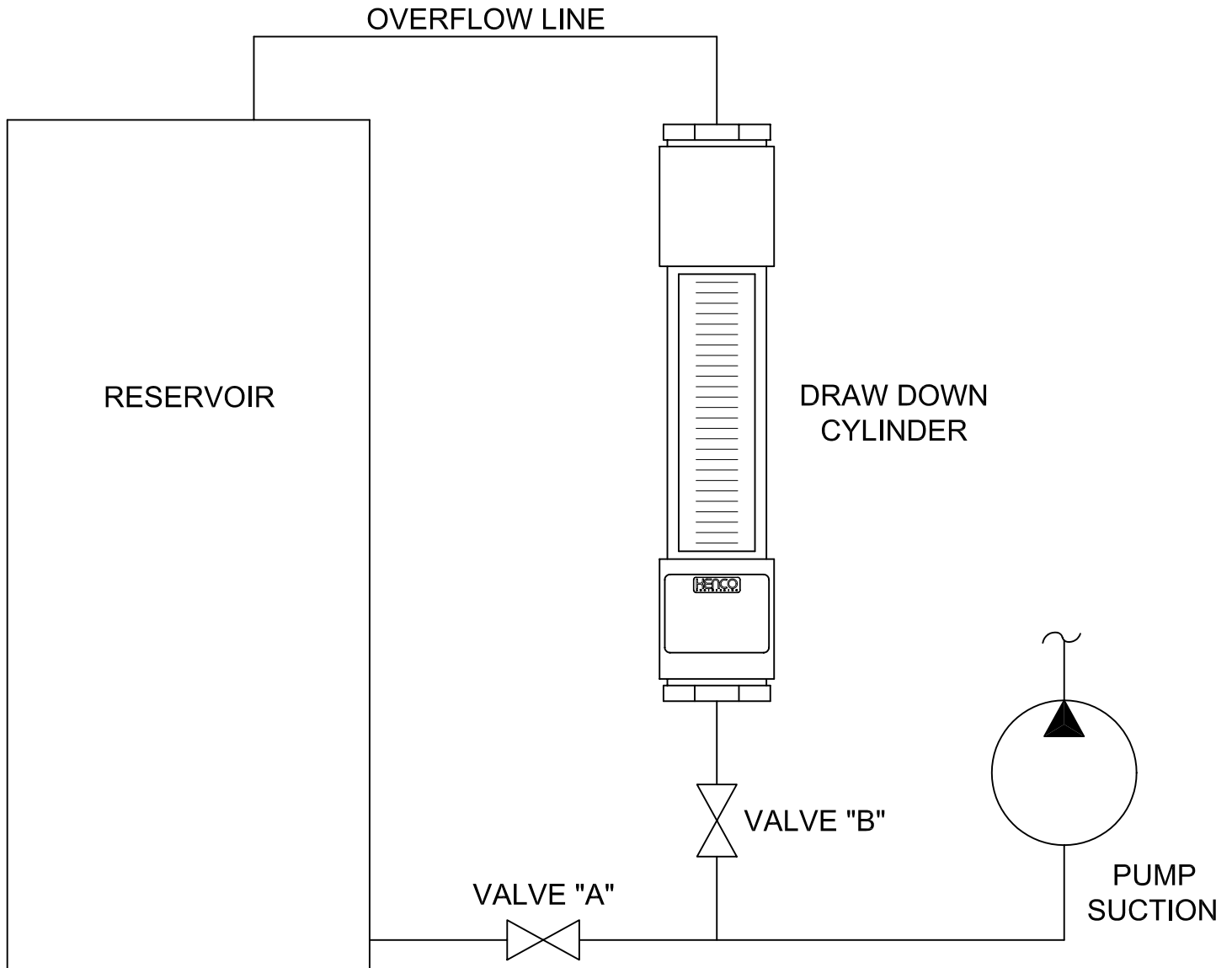


DRAW DOWN CYLINDER INSTALLATION AND OPERATING INSTRUCTIONS



Draw Down Cylinders are available with NPT female connections on each end (as illustrated above) or a removable slip on cap with a 1/8"Ø vent hole through center. Cylinders have a volume scale in milliliters and a rate scale in gallons per hour based on a one minute test.

To check pumping rate, open VALVE "B" and fill the cylinder to the top division mark. When the liquid level reaches the top mark, close VALVE "A" and at the same time, begin timing the test. After one minute, observe the liquid level in the cylinder. The change in level after one minute is the actual pump rate of the chemical pump. When the cylinder is not in use, VALVE "B" must be closed. VALVE "A" must remain open at all times except when the user is testing the pump rate.

