

LIQUID LEVEL GAUGES

SAFEGUARD SERIES LEVEL GAUGE

(SHIELDED TUBULAR LIQUID LEVEL GAUGE, U.S. PATENT NUMBER 4,693,117)



APPLICATIONS:

The Safeguard liquid level gauge replaces unprotected tubular glass that is installed between tubular gauge glass valves. The packing nut on the tubular valve tightens around the metal nozzles of the Safeguard gauge, not glass! Nozzles match the O.D. of 5/8" glass or 3/4" glass. Gauge is suitable for low to medium pressure applications to 500 psig.

SAFETY:

Sight tube is totally enclosed on three sides by a metal frame and on the front with a shield.

ONE-PIECE ASSEMBLY:

One continuous gauge provides total visibility of the liquid level of a tank. Maximum length is 20 feet. No stacking of gauges is needed.

ECONOMICAL:

One Liquid Level Gauge per tank with a set of KENCO tubular valves gives the full view of the liquid level in the tank.

EASY TO INSTALL:

Insert the 5/8" or 3/4" metal nozzles into the existing valves. The stuffing box seals around the metal nozzle, not the glass.

VOLUME AND HEIGHT SHIELDS:

The shield can be supplied with various scales indicating height, calibration rate, or tank volume. Refer to page 12 to see the assortment of standard shield options.

EPG SERIES LEVEL GAUGE

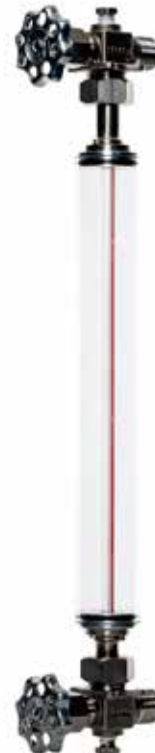
(ENVIRONMENTAL PROTECTION GAUGE, U.S. PATENT NUMBER 5,442,959)

APPLICATIONS:

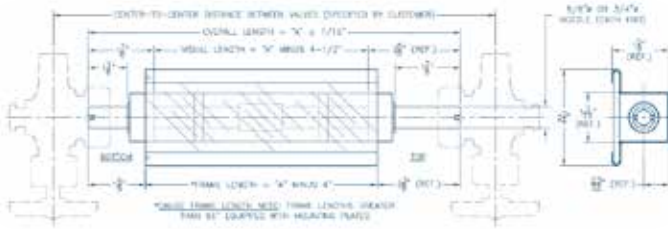
The KENCO Environmental Protection Gauge protects the glass with a 360° UV stabilized polycarbonate tube. This gauge is ideal for an outdoor environment where the gauge is exposed to the elements (i.e. hail, wind, etc.). The gauge is priced to be an economic alternative to a tubular gauge glass shrouded by expanded metal. The EPG will operate in low to medium pressure applications up to 500 psig.

FEATURES:

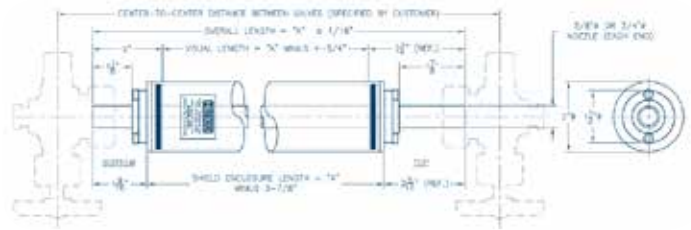
- Replaces unprotected tubular gauge glass.
- 360° visibility of fluid level.
- Redline glass is standard for easy viewing of fluid level.
- The tubular valve packing nut tightens around 316 S.S. nozzles, not glass!
- Outer tube is high impact UV stabilized polycarbonate tubing.
- 316 S.S. nozzles available in 5/8" O.D. or 3/4" O.D.
- Easy to install - Insert the 5/8" O.D. or 3/4" O.D. nozzles into the valves.
- Ideal for use with KENCO Tubular Valves (KTV).
- Maximum temperature: 250°F
- Maximum overall length is 52-3/4". For longer lengths, use Safeguard Level Gauge.



SAFEGUARD SERIES LEVEL GAUGE



EPG SERIES LEVEL GAUGE



ORDERING GUIDE

REQUESTED BY: _____ COMPANY: _____
 ADDRESS: _____ CITY: _____ STATE: _____ ZIP: _____
 PHONE: _____ FAX: _____ EMAIL: _____

SAFEGUARD Series Level Gauge

<input type="text"/>	<input type="text"/>	<input type="text"/>	<input type="text"/>
Gauge Style 62=5/8" O.D. Tubular Connection 75=3/4" O.D. Tubular Connection	Center-to-Center Distance Between Valves (Inches)	Material of Construction C=Zinc Plated Carbon Steel A=Stainless Steel W=316 Stainless Steel Wetted Parts w/ Carbon Steel Frame PC=PVC Wetted Parts w/Carbon Steel Frame PS=PVC Wetted Parts w/Stainless Steel Frame Other (Please Specify)	Seal Material V=Fluorocarbon A=Aflas B=Buna-N T=PTFE E=Ethylene Propylene (Other Materials Available upon Request)
<input type="text"/>	<input type="text"/>	<input type="text"/>	<input type="text"/>
Shield Options** L=Clear Polycarbonate H=Height Scale RH=Rate Height Scale MH=Metric Height Scale MRH=Metric Rate Height Scale M=Expanded Metal Guard	Sight Tube Options* GS=5/8" O.D. Glass (Standard) RL=5/8" O.D. Redline Glass (Other Materials Available upon Request)	Maximum Working Pressure (PSIG)	Maximum Operating Temperature (°F)
<input type="text"/>	<input type="text"/>	<input type="text"/>	<input type="text"/>
Steam S=Steam Application NS=Non-Steam Application	Valve Manufacturer KENCO Other (Please Specify)	Valve Manufacturer Part # KTV Other (Please Specify)	To Be Determined By KENCO
<input type="text"/>	<input type="text"/>	<input type="text"/>	<input type="text"/>
Overall Length (Inches)			

EPG Series Level Gauge

<input type="text"/>	<input type="text"/>	<input type="text"/>	<input type="text"/>	<input type="text"/>
Gauge Style EPG-5/8=5/8" O.D. Tubular Connection EPG-3/4=3/4" O.D. Tubular Connection	Center-to-Center Distance Between Valves (Inches)	Seal Material V=Fluorocarbon A=Aflas B=Buna-N T=FEP Encapsulated Silicone E=Ethylene Propylene (Other Materials Available upon Request)	Sight Tube Options* RL=5/8" O.D. Redline Glass (Other Materials Available upon Request)	Maximum Working Pressure (PSIG)
<input type="text"/>	<input type="text"/>	<input type="text"/>	<input type="text"/>	<input type="text"/>
Maximum Operating Temperature (°F)	Steam S=Steam Application NS=Non-Steam Application	Valve Manufacturer KENCO Other (Please Specify)	Valve Manufacturer Part # KTV Other (Please Specify)	To Be Determined By KENCO
<input type="text"/>	<input type="text"/>	<input type="text"/>	<input type="text"/>	<input type="text"/>
Overall Length (Inches)				

* Based on application data provided, KENCO will select the appropriate sight tube material, i.e. high pressure glass.

** For shield options see page 12 for reference.