

MODEL NO.: KEFS-2-SPDT5-S6-TB

SPECIFICATIONS:

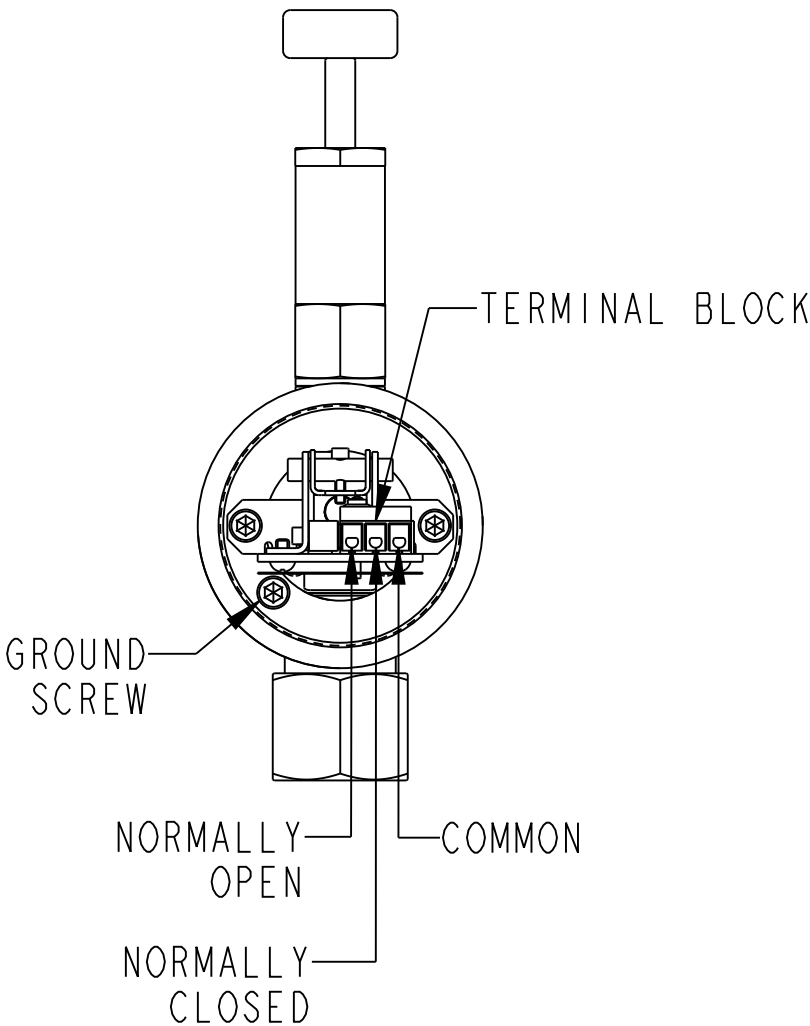
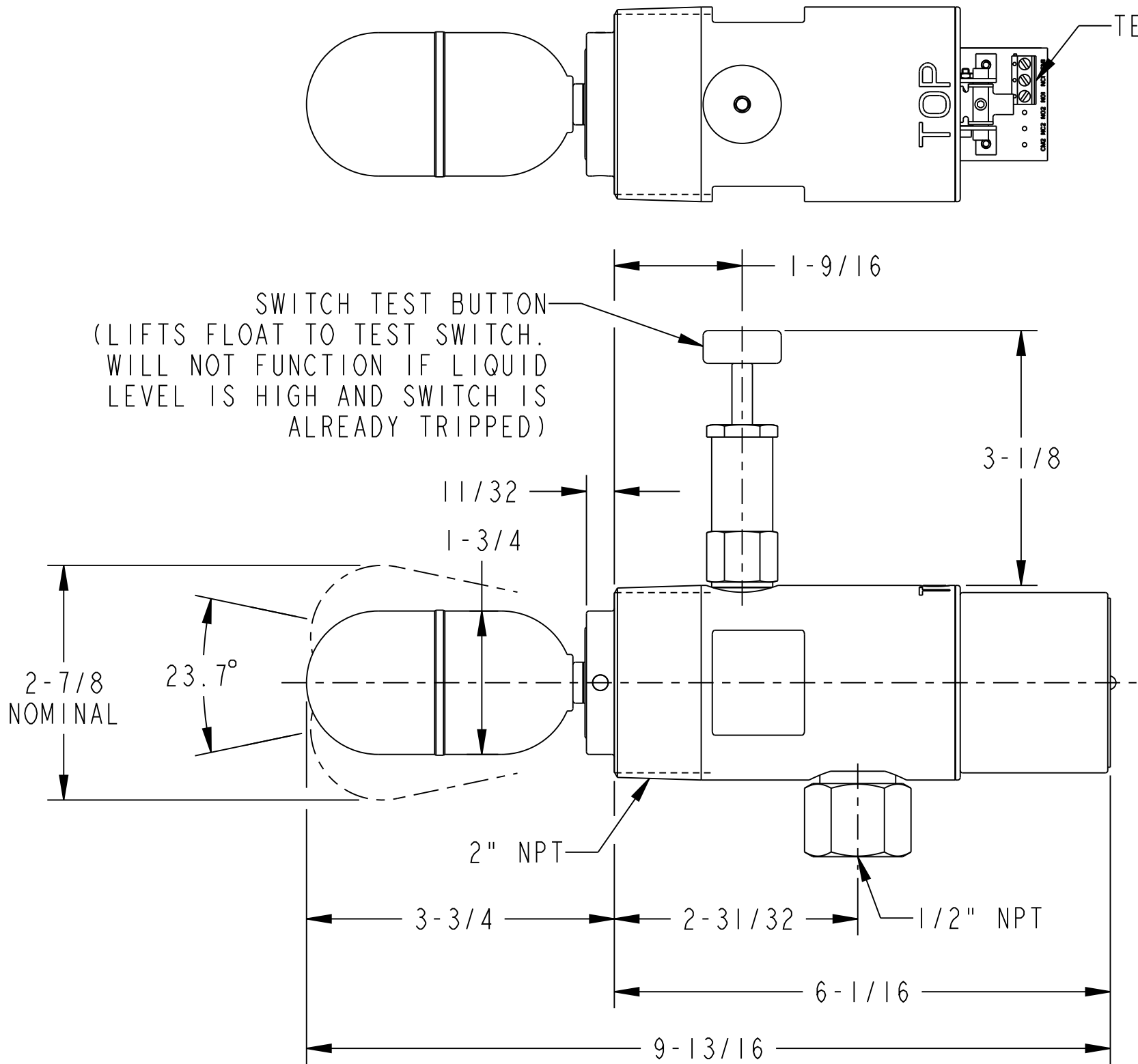
SWITCH RATING: 5A @ 125/250 VAC
5A @ 30 VDC

CONTACT TYPE: SPDT


MINIMUM OPERATING S.G.: .53

MAX. WORKING PRESSURE: 2000 PSI

WETTED MATERIALS: 316 STAINLESS STEEL



DIMENSIONS ARE FOR REFERENCE ONLY AND ARE
SUBJECT TO CHANGE AT ANYTIME WITHOUT NOTICE.

				DIM'S IN INCHES	 ENGINEERING Tulsa, Oklahoma USA	MATERIAL:		SEE B/M	
				TOLERANCES UNLESS OTHERWISE SPECIFIED.		RELEASE LEVEL:		RELEASED	
A	8/09/21	BRC	RELEASED	<div>ANGULAR ±1/2° FRACTIONAL ±1/64" (X.X) ±0.015" (X.XX) ±0.010" (X.XXX) ±0.005" MACH FILLET RAD-.031" 125 MAX. FINISH, ALL MACHINED SURFACES.</div>	DRAWING CREATED IN PRO/ENGINEER				
	000314	DS							
REV.	DATE	DRN.	DESCRIPTION		TITLE: SWITCH,ELECTRIC FLOAT,2000 PSI, 5A SPDT KEFS-TB 316 S.S.(OUTLINE DRAWING)				
	ECN	CHKD.							
PROPRIETARY: THIS DRAWING AND THE INFORMATION CONTAINED HEREIN IS PROPRIETARY TO KENCO ENGINEERING CO. AND SHALL NOT BE REPRODUCED, COPIED, OR DISCLOSED IN WHOLE OR IN PART, OR USED FOR MANUFACTURE OR FOR ANY OTHER PURPOSE WITHOUT THE WRITTEN PERMISSION OF KENCO ENGINEERING.					DRN. BY:	BRC	SCALE:	0.625	DRAWING NUMBER 88141
					CHKD. BY:	DS	REVISION:	A	
					DATE:	8/09/21	SHEET 1 OF 3		