

MODEL NO.: KEFS-2-DPDT4-TB

SPECIFICATIONS:

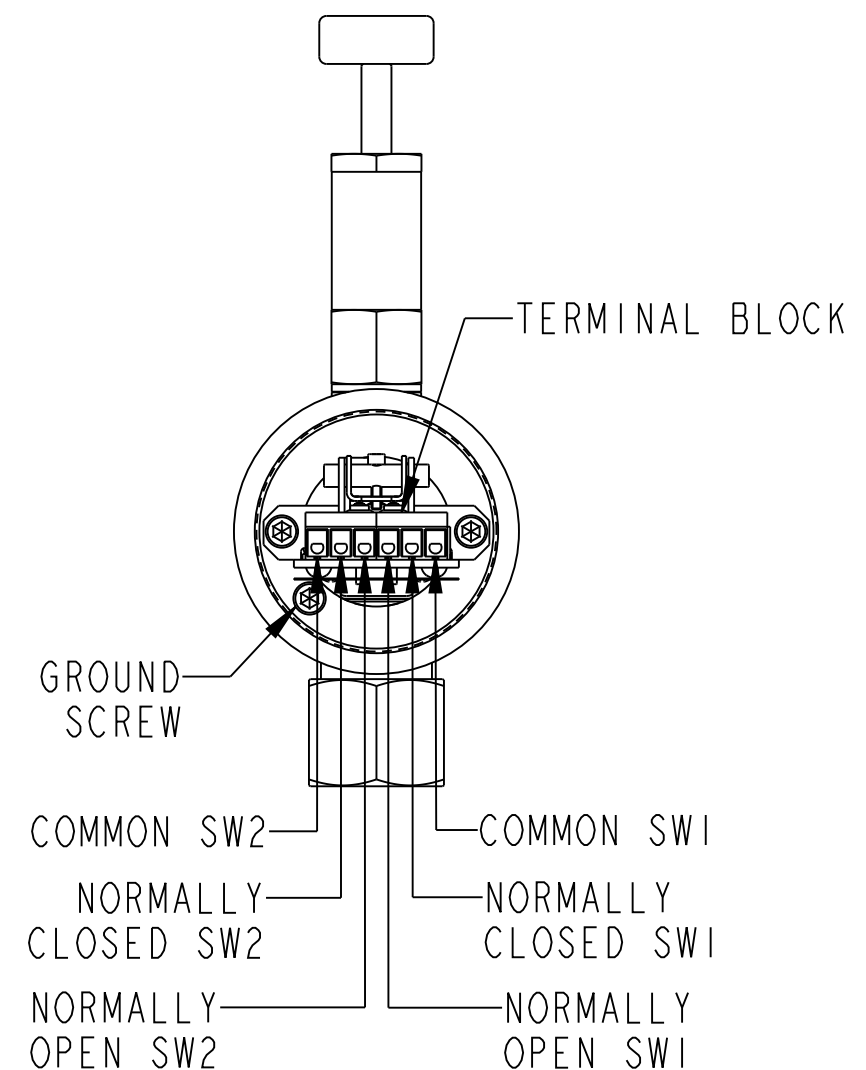
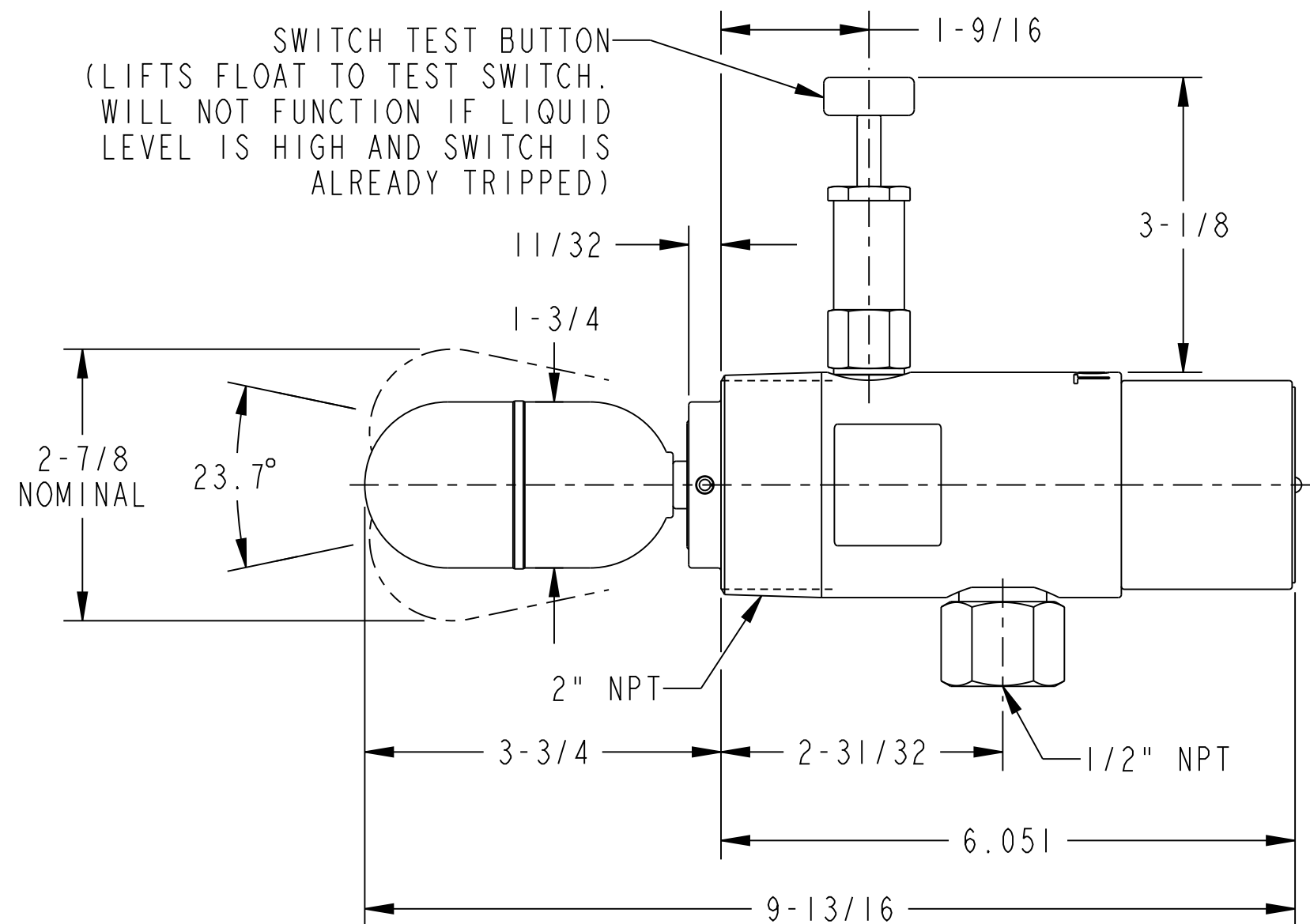
SWITCH RATING: 4A @ 125/250 VAC
5A @ 30 VDC

CONTACT TYPE: DPDT

MINIMUM OPERATING S.G.: .53

MAX. WORKING PRESSURE: 2000 PSI

WETTED MATERIALS: 303/304 STAINLESS STEEL.



DIMENSIONS ARE FOR REFERENCE ONLY AND ARE
SUBJECT TO CHANGE AT ANYTIME WITHOUT NOTICE.

| | | | | | | | | | | | | | |
|--|---------|-------|-------------|--|--|---|--|---------------------------------|--------------|----------|-------|----------------|--|
| | | | | DIM'S IN INCHES | | <div>KENCO ENGINEERING Tulsa, Oklahoma USA</div> | | MATERIAL: | | SEE B/M | | | |
| | | | | TOLERANCES UNLESS OTHERWISE SPECIFIED. | | | | RELEASE LEVEL: | | RELEASED | | | |
| A | 8/06/21 | BRC | RELEASED | | | <div>ANGULAR ±1/2° FRACTIONAL ±1/64" (X.X) ±0.015" (X.XX) ±0.010" (X.XXX) ±0.005" MACH FILLET RAD-.031" 125 MAX. FINISH, ALL MACHINED SURFACES.</div> | | DRAWING CREATED IN PRO/ENGINEER | | | | | |
| | 000314 | DS | | | | | | TITLE: | | | | | |
| REV. | DATE | DRN. | DESCRIPTION | | | SWITCH,ELECTRIC FLOAT,2000 PSI 4A DPDT KEFS-TB (OUTLINE DRAWING) | | | | | | | |
| | ECN | CHKD. | | | | DRN. BY: | | BRC | SCALE: | | 0.625 | DRAWING NUMBER | |
| | | | | | | CHKD. BY: | | DS | REVISION: | | A | 88139 | |
| | | | | | | DATE: | | 8/06/21 | SHEET 1 OF 3 | | | | |
| <div>PROPRIETARY: THIS DRAWING AND THE INFORMATION CONTAINED HEREIN IS PROPRIETARY TO KENCO ENGINEERING CO. AND SHALL NOT BE REPRODUCED, COPIED, OR DISCLOSED IN WHOLE OR IN PART, OR USED FOR MANUFACTURE OR FOR ANY OTHER PURPOSE WITHOUT THE WRITTEN PERMISSION OF KENCO ENGINEERING.</div> | | | | | | | | | | | | | |