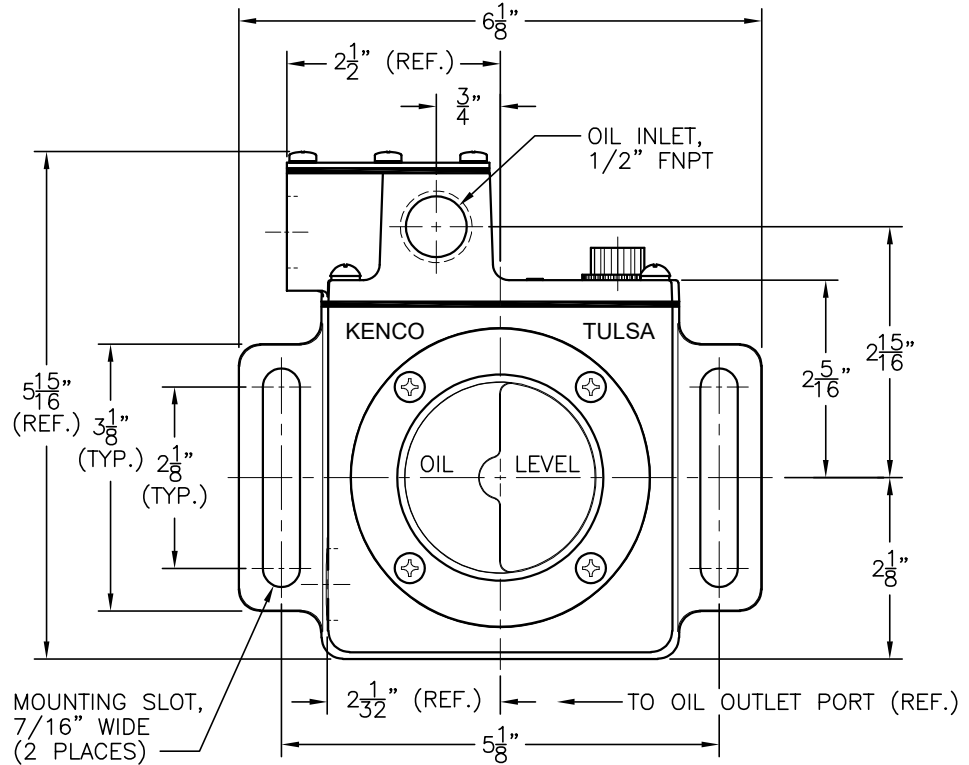
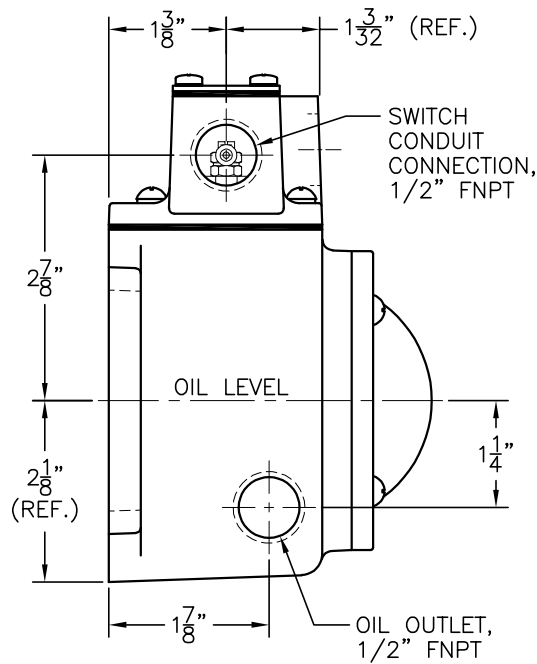
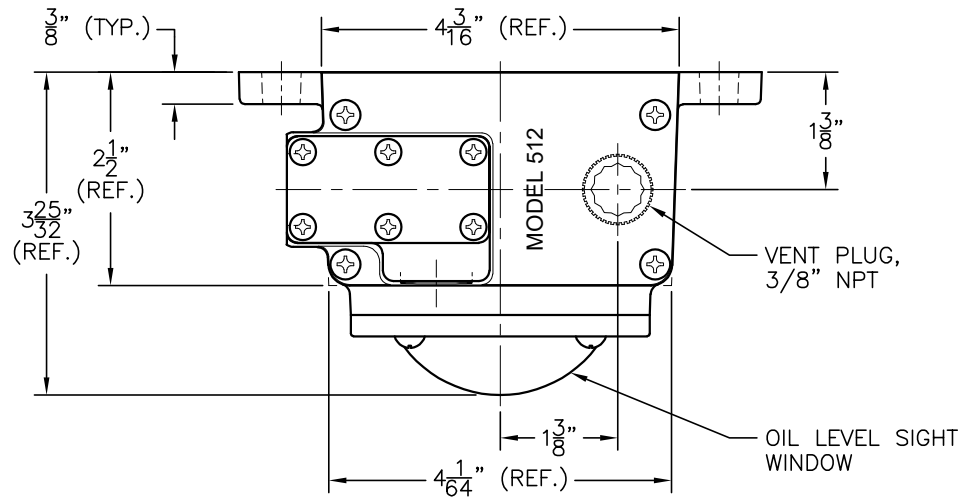


CATERPILLAR PART NUMBER:
213-6133



DIMENSIONS ARE FOR REFERENCE PURPOSES ONLY AND ARE SUBJECT TO CHANGE AT ANY TIME WITHOUT NOTICE
COPYRIGHT © 2003-KENCO INTERNATIONAL, INC.-ALL RIGHTS RESERVED

REV.	DATE	BY	ECN	EXPLANATION:
A	04-24-02	RDM	N/A	ADDED CATERPILLAR PART NUMBER
B	06-06-02	RDM	N/A	2-1/2" WAS 2-17/32"; 3-25/32" WAS 3-13/16"
C	02-04-03	DPS	N/A	REMOVED TOL. NOTE, ADDED DIM. REF. NOTE
D	05-06-04	RDM	N/A	5-15/16" (REF.) WAS 5-31/32" (REF.)

KENCO ENGINEERING COMPANY
TULSA, OKLAHOMA

CONTROLLER, OIL LEVEL MODEL CP-512
(OUTLINE DRAWING)

DATE: 12-19-01
DRN. BY: RDM
SCALE: NONE

SHEET: 1 OF 1
CHKD. BY:
REVISION: D

DRAWING NUMBER
C-42035