

CALIBRATION POTS

CALIBRATION POTS FOR CALIBRATING CHEMICAL PUMPS

APPLICATIONS:

The Calibration Pot provides a means to accurately and precisely check the feed rate of a chemical metering pump and can also be used as the primary containment vessel. There are many sizes available to accommodate a wide range of flow rates. Give us your design criteria and we will customize a unit to fit your needs.

OPERATING PRINCIPLE:

The unit is installed between the suction side of the chemical metering pump and the chemical storage tank. The flow rate is checked by closing the valve between the storage tank and the Calibration Pot and observing the liquid level change on the calibrated scale for one minute.

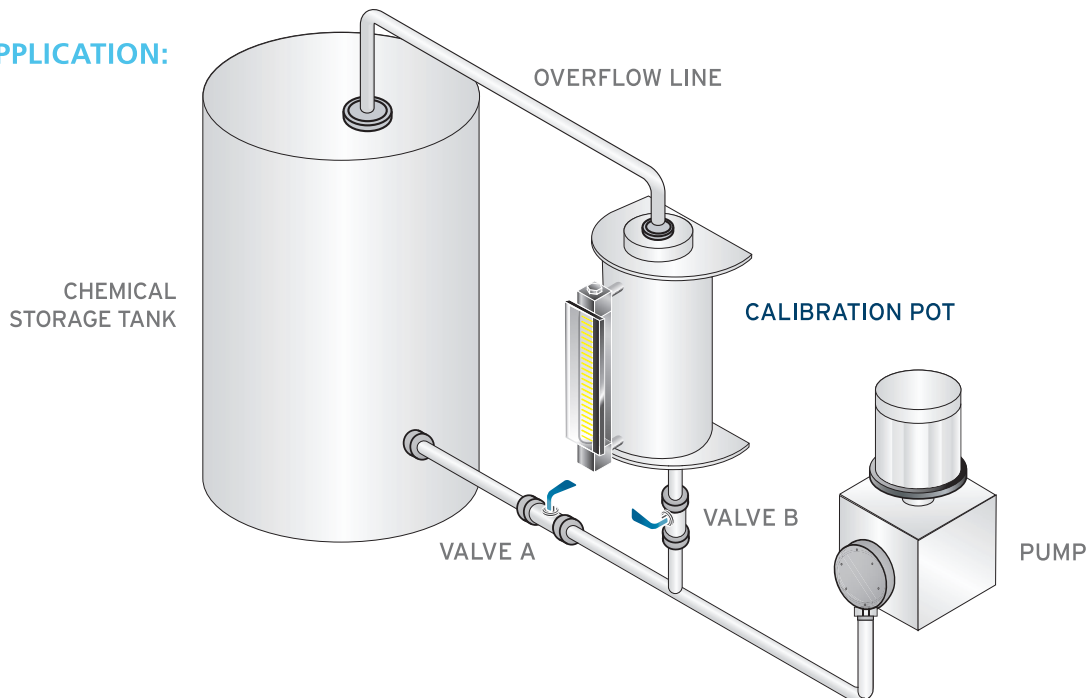
FEATURES:

- The Kenco Calibration Pot is often the preferred option for offshore installations due to the robust design. The totally enclosed construction ensures maximum safety.
- Standard construction options are 316 Stainless Steel, Hastelloy C-276, Alloy 20 and Painted Carbon Steel. Other materials such as PVC and CPVC are available.
- Sight tube is glass, but other materials can be substituted.
- A wide variety of seal material options are available to meet your chemical resistance needs.
- Standard Calibration Pot sizes cover a broad range of flow rates from 2.5 Gallons per Hour (9.46 Liters per Hour) to 620 Gallons per Hour (2346.95 Liters per Hour).
- Six standard calibrated scale options are available: Gallons per Hour (GPH), Gallons per Day (GPD), Liters per Hour (LPH), Liters per Day (LPD), U.S. Gallons by Volume (GBV) and Liters by Volume (LBV). Other scale units available upon request.
- Rate scales are based on a one minute test, but we can accommodate other test times as well.
- Scales are individually calibrated to assure maximum accuracy.
- Scales are engraved on a clear polycarbonate sight tube shield for maximum impact resistance.
- Scales have engraved lines and characters filled with yellow enamel that is highly visible and easy to read against all liquids.
- Standard connections are FNPT or Flanged, but we can accommodate for any size or type of connection desired.

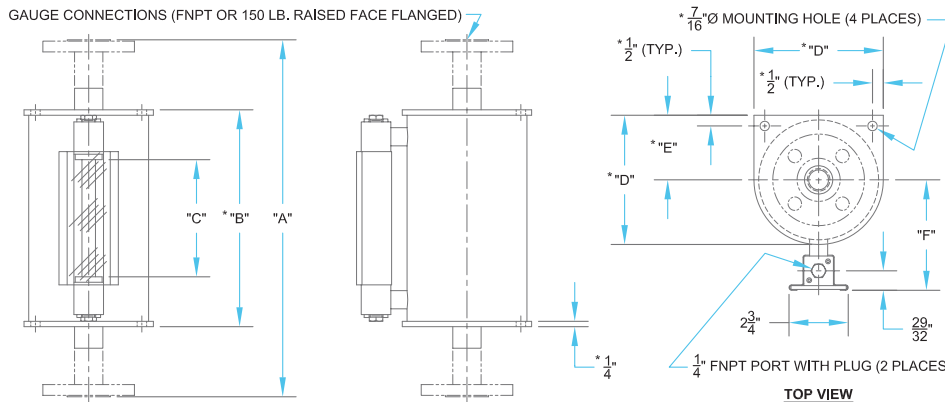


CALIBRATION POTS AVAILABLE WITH FLANGED OR THREADED CONNECTIONS

COMMON APPLICATION:



CALIBRATION POTS



CALIBRATION POT SPECIFICATIONS

MODEL NUMBER (CONNECTION SIZE)		MAXIMUM PUMPING RATE (BASED ON A 1 MINUTE TEST)				VOLUME		A		B*	C	D*	E*	F
THREADED	FLANGED	GPH	GPD	LPH	LPD	GBV	LBV	FNPT	FLGD.					
15842 (3/4" FNPT)	15843 (3/4" 150#)	2.5	60	9.46	227.12	0.04	0.16	21-7/8"	24-3/8"	N/A	15-3/4"	N/A	N/A	2-7/8"
15844 (3/4" FNPT)	15845 (3/4" 150#)	5	120	18.93	454.25	0.08	0.32	27-1/8"	29-5/8"	N/A	21"	N/A	N/A	3"
15846 (3/4" FNPT)	15847 (3/4" 150#)	10	240	37.85	908.5	0.17	0.63	26-1/8"	30-5/8"	24-1/8"	19-1/2"	2-3/8"	1-3/16"	3-9/32"
15848 (1" FNPT)	15849 (1" 150#)	20	480	75.71	1816.99	0.33	1.26	24-1/4"	28-3/8"	21-7/8"	17-1/4"	3-1/4"	1-5/8"	3-25/32"
15850 (1" FNPT)	15851 (1" 150#)	40	960	151.42	3633.98	0.67	2.52	29-1/2"	33-5/8"	27-1/8"	22-1/2"	3-7/8"	1-15/16"	4-3/32"
15852 (1" FNPT)	15853 (1" 150#)	60	1440	227.12	5450.98	1	3.79	27"	31-1/8"	24-5/8"	20"	4-7/8"	2-7/16"	4-19/32"
15854 (1-1/2" FNPT)	15855 (1-1/2" 150#)	80	1920	302.83	7267.97	1.33	5.05	23-1/4"	26-5/8"	20-1/8"	15-1/2"	6"	3"	5-1/8"
15856 (1-1/2" FNPT)	15857 (1-1/2" 150#)	100	2400	378.54	9084.96	1.67	6.31	27-1/4"	30-5/8"	24-1/8"	19-1/2"	6"	3"	5-1/8"
15858 (2" FNPT)	15859 (2" 150#)	120	2880	454.25	10901.95	2	7.57	25-1/2"	28-5/8"	22-1/8"	17-1/2"	7"	3-1/2"	5-21/32"
15860 (2" FNPT)	15861 (2" 150#)	140	3360	529.96	12718.94	2.33	8.83	28-1/2"	31-5/8"	25-1/8"	20-1/2"	7"	3-1/2"	5-21/32"
15862 (2" FNPT)	15863 (2" 150#)	280	6720	1059.91	25437.89	4.67	17.67	30-7/8"	34"	27-1/2"	22-7/8"	9"	4-1/2"	6-21/32"
15864 (2" FNPT)	15865 (2" 150#)	440	10560	1665.58	39973.82	7.33	27.76	30-5/8"	33-3/4"	27-1/4"	22-5/8"	11-1/8"	5-9/16"	7-23/32"
15866 (2" FNPT)	15867 (2" 150#)	620	14880	2346.95	56326.75	10.33	39.12	30-1/4"	33-3/8"	26-7/8"	22-1/4"	13-1/8"	6-9/16"	8-23/32"

*Model number 15842 through 15845 gauges are not equipped with end plates. Model number 15846 through 15851 gauges are equipped with 1/4" thick end plates, but they are round and do not have 7/16" \varnothing mounting holes. See Kenco website for a detailed outline drawing of each model.

ORDERING SYSTEM Calibration Pots

REQUESTED BY: _____ COMPANY: _____
 ADDRESS: _____ CITY: _____ STATE: _____ ZIP: _____
 PHONE: _____ FAX: _____ EMAIL: _____

Calibration Pot Model Number

15842 15849 15856 15863
 15843 15850 15857 15864
 15844 15851 15858 15865
 15845 15852 15859 15866
 15846 15853 15860 15867
 15847 15854 15861
 15848 15855 15862

Material of Construction

CS = Carbon Steel
 SS = 316 Stainless Steel
 HC = Hastelloy C-276
 A20 = Alloy 20
 Other (please specify above)

Seal Material

A = Aflas
 B = Buna-N
 E = Ethylene Propylene
 V = Fluorocarbon
 T = FEP Encapsulated Silicone
 K = Kalrez 4079
 Other (please specify above)

Calibration Scale

GPH = Gallons Per Hour
 GPD = Gallons Per Day
 LPH = Liters Per Hour
 LPD = Liters Per Day
 GBV = Gallons By Volume
 LBV = Liters By Volume
 Other (please specify above)

• Example Order Number: 15842-SS-V-GPH

• Please contact Kenco to request a quote for options not covered by gauge specifications shown above.