

## LIQUID LEVEL GAUGES

### 5700 BULK TANK GAUGE WITH 1/2" CONNECTIONS



The 5700 and 17000 series gauges are armored liquid level gauges with NPT or flanged connections at each end. These gauges provide a visual means for checking the contents of a bulk tank. They can also be used to set and monitor the injection rate of a chemical metering pump. The gauges operate in low to medium pressure applications up to 500 psig.



**5700 BULK TANK GAUGE WITH  
OPTIONAL FLANGE CONNECTION**



### 17000 BULK TANK GAUGE WITH 1" CONNECTIONS

## 5700 AND 17000 SERIES GAUGE SPECIFICATIONS

The armored design of the gauge offers maximum protection for the sight tube from mechanical impact. Three sides of the gauge are protected with a metal frame, while the face of the gauge is protected with an expanded metal or impact resistant polycarbonate shield. The polycarbonate shield can be custom calibrated to read tank volume or any other desired calibration. Please see page 12 for standard shield calibration options. A wide variety of wetted materials and seals are available to ensure compatibility with whatever fluid is being used. For mounting purposes, a mounting lug is welded to the back of the gauge.

The 5700 series has 1/2" MNPT x 3/8" FNPT threaded process connections. 1/2" to 2" flanged process connections are also available. The standard sight tube is 5/8" O.D. glass. Other flange sizes/ratings and sight tube options are also available upon request.

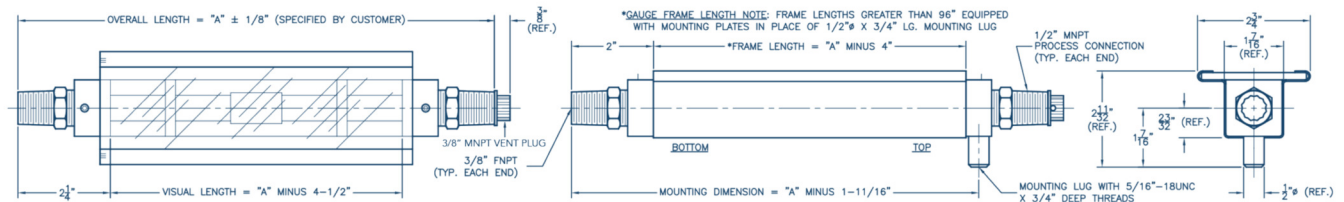
The 17000 gauge is fitted with 1" MNPT process connections (flanged process connections are also available). The standard sight tube is 1" O.D. glass, which makes it ideal for viscous liquids. Other flange sizes/ratings and sight tube options are also available upon request.

## SPECIAL GAUGE APPLICATION-CHEMICAL INJECTION SYSTEMS

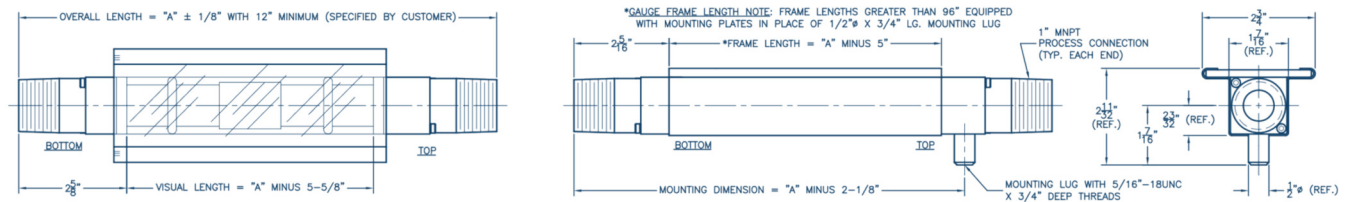
5700 and 17000 gauges are used to calibrate chemical injection systems. The injection rate of a chemical metering pump is checked by closing a valve between the gauge and the chemical storage tank and observing the change in fluid height in one minute. Using the rate scale on the front of the shield, count the number of marks the fluid level passed during the one minute test period. This will give you the actual chemical pump rate. If the rate is not the one desired, make an adjustment to the chemical pump feed rate, and conduct as many one minute tests as is necessary to set the chemical pump to the rate desired.

\* See page 12 for rate scale details.

## 5700 BULK TANK GAUGE



## 17000 BULK TANK GAUGE



- Drawings above represent models with metal process connections.

### ORDERING GUIDE

#### 5700 & 17000 Series Level Gauges

REQUESTED BY: \_\_\_\_\_ COMPANY: \_\_\_\_\_

ADDRESS: \_\_\_\_\_ CITY: \_\_\_\_\_ STATE: \_\_\_\_\_ ZIP: \_\_\_\_\_

PHONE: \_\_\_\_\_ FAX: \_\_\_\_\_ EMAIL: \_\_\_\_\_

<input type="text"/>	<input type="text"/>	<input type="text"/>	<input type="text"/>	<input type="text"/>
<b>Gauge Style</b> 5700=Gauge w/ 1/2" MNPT Connections 17000=Gauge w/ 1" MNPT Connections	<b>Flange Option</b> N=None (Leave Blank) FL50=1/2" 150# R.F. Flange FL75=3/4" 150# R.F. Flange FL10=1" 150# R.F. Flange FL15=1-1/2" 150# R.F. Flange FL20=2" 150# R.F. Flange (Other Flange Sizes/Ratings Available upon Request)  <b>Flanged Option N/A with W Option</b>	<b>Overall Length of Gauge (Inches)</b>	<b>Material of Construction</b> C=Zinc Plated Carbon Steel A=Stainless Steel S6=All 316 Stainless Steel W=All Wetted Parts 316 Stainless Steel w/Zinc Plated Carbon Steel Frame PC=PVC Wetted Parts w/Carbon Steel Frame PS=PVC Wetted Parts w/Stainless Steel Frame Other (Please Specify)	<b>Seal Material</b> V=Fluorocarbon A=Aflas B=Buna-N T=(5700) PTFE (17000)FEP Encapsulated Silicone E=Ethylene Propylene (Other Materials Available upon Request)
<input type="text"/>	<input type="text"/>	<input type="text"/>	<input type="text"/>	<input type="text"/>
<b>Shield Options*</b> L=Clear Polycarbonate H=Height Scale RH=Rate Height Scale MH=Metric Height Scale MRH=Metric Rate Height Scale M=Expanded Metal Guard	<b>Sight Tube Options**</b> GS=5/8" O.D. Glass (5700) 1" O.D. Glass (17000) RL=5/8" O.D. Redline Glass (5700) 1" O.D. Redline Glass (17000) (Other Materials Available upon Request)	<b>Maximum Working Pressure (PSIG)</b>	<b>Maximum Operating Temperature (°F)</b>	<b>Steam</b> S=Steam Application NS=Non-Steam Application

- Example Order Number: 5700-52-CVH-GS-ATM-200-NS

\* See page 12 for shield descriptions.

\*\* Based on application data provided, KENCO will select the appropriate sight tube material, i.e. high pressure glass.