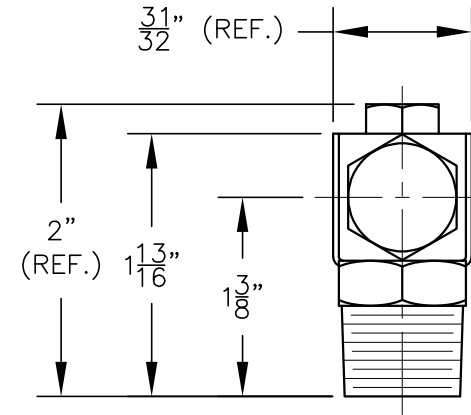
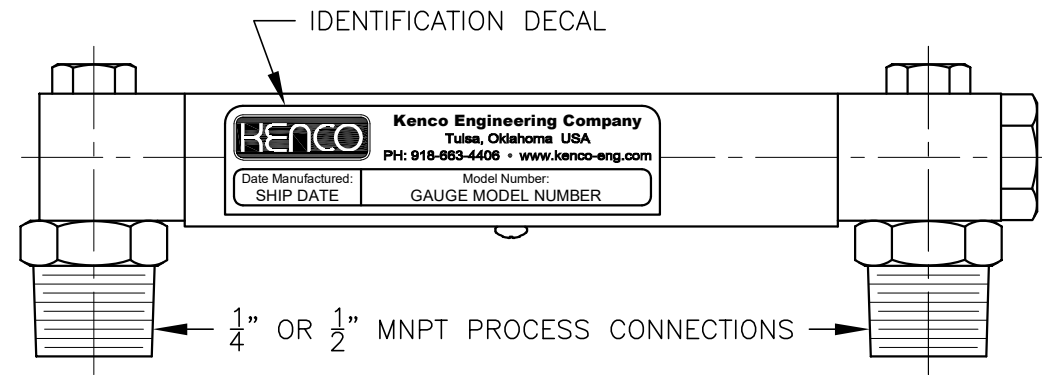


MODEL NUMBER AND MATERIALS OF CONSTRUCTION

MODEL NUMBER	CONNECTION SIZE	MATERIALS OF CONSTRUCTION
44M25-A	1/4" MNPT	316 S.S., GLASS AND AFLAS, BUNA-N, EPDM, KALREZ OR FLUOROCARBON WETTED PARTS WITH 304 S.S. FRAME
44M50-A	1/2" MNPT	
44M25-B	1/4" MNPT	NICKEL PLATED BRASS, BRASS, 316 S.S., GLASS AND AFLAS, BUNA-N, EPDM, KALREZ OR FLUOROCARBON WETTED PARTS W/NICKEL PLATED BRASS FRAME
44M50-B	1/2" MNPT	
44M25-S	1/4" MNPT	316 S.S., GLASS AND AFLAS, BUNA-N, EPDM, KALREZ OR FLUOROCARBON WETTED PARTS WITH 316 S.S. FRAME
44M50-S	1/2" MNPT	



REFERENCE NOTES:

1. REFER TO 80295 FOR ORDERING GUIDE.
2. REFER TO 85181 FOR INSTALLATION INSTRUCTIONS AND SPARE PARTS.

DIMENSIONAL NOTE:
DIMENSIONS ARE FOR REFERENCE PURPOSES ONLY AND ARE SUBJECT TO CHANGE AT ANY TIME WITHOUT NOTICE.

INFORMATION IS PROPRIETARY TO KENCO ENGINEERING CO.

REV.	DATE	BY	CHKD.	ECN	EXPLANATION:
G	04-16-15	RDM	KLM	N/A	ITEM 10 P/N ON "-B" AND "-S" GAUGES WAS 29531-S6; ITEM 10 P/N ON "-C" GAUGE WAS 29531-CS
H	04-16-20	RDM	KLM	N/A	ADDED SHEET 1; REMOVED ALUMINUM AND CARBON STEEL MATERIAL OPTIONS
J	09-19-22	RDM	DM	N/A	ADDED 44M25-A/44M50-A MATL. OPTION; ITEM 1 P/N ON 29565-S AND 29566-S WAS 29521-S; ITEM 13 P/N WAS 51422

KENCO ENGINEERING COMPANY
TULSA, OKLAHOMA

GAUGE, BULK TANK (4400 SERIES)

DATE: 02-11-97	SHEET: 1 OF 2	DRAWING NUMBER
DRN. BY: RDM	CHKD. BY: DM	29565
SCALE: 3/4"=1"	REVISION: J	29566