

LIQUID LEVEL GAUGES



4400 SERIES LEVEL GAUGE CLOSE-MOUNT LEVEL GAUGE

APPLICATIONS:

The KENCO close-mount level gauge is ideally suited for applications in which the level gauge must be mounted with a minimum of protrusion from the tank. Typical applications include offshore or corrosive atmospheres, packaged hydraulic equipment, steel mill pumps, panel boards, surge tanks, radiator fluid levels.

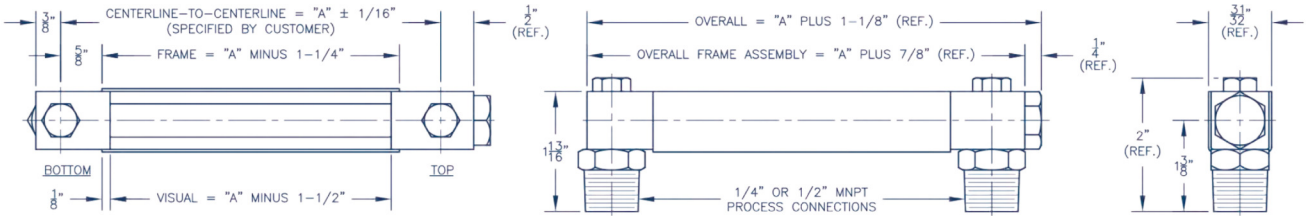
The design of these gauges affords easy installation. Simply install the male thread adapter into the tank connection and then slide the gauge frame over these adapters and bolt gauge into place. The glass is protected from breakage by the gauge housing.

FEATURES:

- Redline glass for easy observation of fluid level
- Metal frame on three sides protects glass
- Easy installation-no pipe unions and/or threaded nipples required
- 1/4" or 1/2" connections mount directly into FNPT process connection
- Maximum Pressure: 135 PSIG
- Maximum length: 60"



4400 SERIES LEVEL GAUGE



ORDERING GUIDE 4400 Series Level Gauge

REQUESTED BY: _____ COMPANY: _____
 ADDRESS: _____ CITY: _____ STATE: _____ ZIP: _____
 PHONE: _____ FAX: _____ EMAIL: _____

_____ — _____ — _____ — _____

Gauge Style
 44M25=1/4" MNPT
 44M50=1/2" MNPT

Center-to-Center Dimension (inches)

Material of Construction
 A=316 Stainless Steel Wetted Parts with 304 Stainless Steel Frame
 S=316 Stainless Steel
 B=Nickel Plated Brass (limited sizes available)

Seal Material
 V=Fluorocarbon
 A=Aflas
 B=Buna-N
 E=Ethylene Propylene (Other Materials Available upon Request)

HPRL — _____ — _____ — NS

Sight Tube Option*
 HPRL=1/2" O.D. Redline Glass
 (Other materials available upon request)

Maximum Working Pressure (PSIG)

Maximum Operating Temperature (°F)

Steam
 NS=Non-Steam Application

• Example Order Number: 44M50-22-S-B-HPRL-ATM-150-NS
 * Based on Application data provided, Kenco will select the appropriate sight tube material