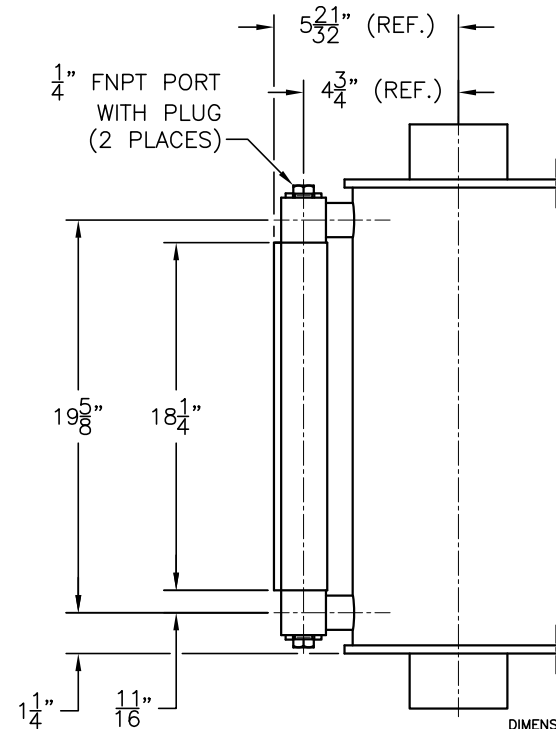


ORDERING INFORMATION			
MODEL NUMBER	TANK MATERIAL	SEAL MATERIAL	SCALE CALIBRATION
15858	CS OR SS	A, B, E, V OR T	SEE TABLE BELOW

EXAMPLE MODEL NUMBER: 15858-SS-V-GPH

SCALE CALIBRATION OPTIONS / DEFINITIONS	MAXIMUM PUMPING RATE/GAUGE VOLUME	SCALE CALIBRATION INCREMENT VALUE
GPH=GALLONS PER HOUR	120	2
LPH=LITERS PER HOUR	454.25	10
GPD=GALLONS PER DAY	2880	50
LPD=LITERS PER DAY	10,901.95	200
GBV=GALLONS BY VOLUME	2	0.05
LBV=LITERS BY VOLUME	7.57	0.1

NOTE: GPH/LPH/GPD/LPD SCALES ARE BASED ON A ONE MINUTE TEST.
 WETTED PARTS: TANK, SIGHT TUBE AND SIGHT TUBE O-RING SEALS



DIMENSIONAL NOTE:
 DIMENSIONS ARE FOR REFERENCE PURPOSES ONLY AND ARE SUBJECT TO CHANGE AT ANY TIME WITHOUT NOTICE.

INFORMATION IS PROPRIETARY TO KENCO ENGINEERING CO.

PART NUMBER AND MATERIAL DESIGNATION:

DRAWING NO.	MODEL NO.	MATERIAL:
C-15858-CS	15858-CS	(CARBON STEEL TANK WITH 316/316L STAINLESS STEEL WETTED PARTS ON SIGHT GAUGE)
C-15858-SS	15858-SS	(316/316L STAINLESS STEEL WETTED PARTS)
C-15858-S6	15858-S6	(316/316L STAINLESS STEEL CONSTRUCTION)

REV.	DATE	BY	CHKD.	ECN	EXPLANATION:	KENCO ENGINEERING COMPANY TULSA, OKLAHOMA
B	12-14-94	RC	-	-	ITEM 4 P/N WAS A-18954, MAT'L WAS 6061-T6 ALUM.	
C	05-03-10	DS	PAS	000008	REDRAWN; WAS HAND DWG.; ITEM 2 DESCRIPTION WAS PYREX GAUGE GLASS	POT, CALIBRATION (OUTLINE) MODEL NO. 15858
					ITEM 6 WAS P-13698; ADDED SHEET 2 OF 2; ADDED 13114-A	
D	07-18-19	BRC	DS	000299	UPDATED TO REFLECT CHANGE TO 3000 LB. COUPLING.; ADDED -S6 OPTION	DATE: 11-21-91 DRN. BY: RC SCALE: NONE
						SHEET: 1 OF 2 CHKD. BY: REVISION: D
						DRAWING NUMBER C-15858