

PART NUMBER AND MATERIAL DESIGNATION:

DRAWING NO.	MODEL NO.	MATERIAL:
C-15854-CS	15854-CS	(CARBON STEEL TANK WITH 316/316L STAINLESS STEEL WETTED PARTS ON SIGHT GAUGE)
C-15854-SS	15854-SS	(316/316L STAINLESS STEEL WETTED PARTS)
C-15854-S6	15854-S6	(316/316L STAINLESS STEEL CONSTRUCTION)

ORDERING INFORMATION

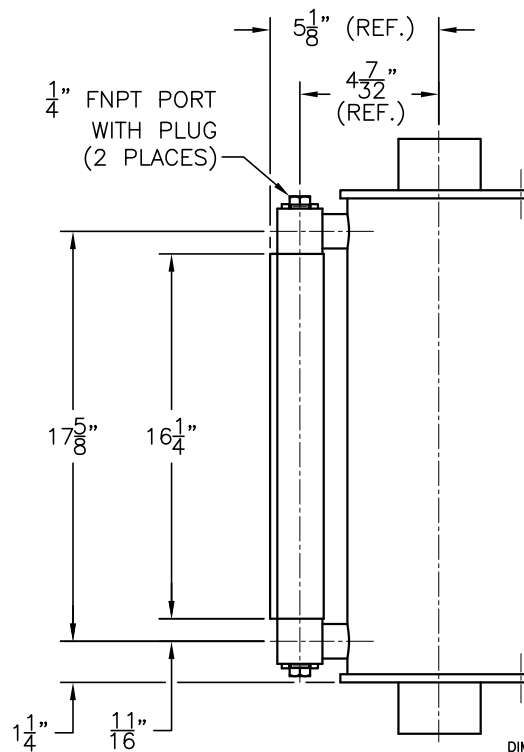
MODEL NUMBER	TANK MATERIAL	SEAL MATERIAL	SCALE CALIBRATION
15854	CS OR SS	A, B, E, V OR T	SEE TABLE BELOW

EXAMPLE MODEL NUMBER: 15854-SS-V-GPH

SCALE CALIBRATION OPTIONS / DEFINITIONS	MAXIMUM PUMPING RATE/GAUGE VOLUME	SCALE CALIBRATION INCREMENT VALUE
GPH=GALLONS PER HOUR	80	2
LPH=LITERS PER HOUR	302.83	5
GPD=GALLONS PER DAY	1920	25
LPD=LITERS PER DAY	7267.97	100
GBV=GALLONS BY VOLUME	1.33	0.02
LBV=LITERS BY VOLUME	5.05	0.1

NOTE: GPH/LPH/GPD/LPD SCALES ARE BASED ON A ONE MINUTE TEST.

WETTED PARTS: TANK, SIGHT TUBE AND SIGHT TUBE O-RING SEALS



DIMENSIONAL NOTE:
DIMENSIONS ARE FOR REFERENCE PURPOSES ONLY AND ARE SUBJECT TO CHANGE AT ANY TIME WITHOUT NOTICE.

INFORMATION IS PROPRIETARY TO KENCO ENGINEERING CO.

REV.	DATE	BY	CHKD.	ECN	EXPLANATION:	KENCO ENGINEERING COMPANY TULSA, OKLAHOMA		
C	05-05-10	DS	PAS	000008	REDRAWN; WAS HAND DWG.; ITEM 2 DESCRIPTION WAS PYREX GAUGE GLASS	POT, CALIBRATION (OUTLINE) MODEL NO. 15854		
					ITEM 6 WAS P-13698; ADDED SHEET 2 OF 2; ADDED 13114-A			
D	01-15-13	EDM	KI	000186	5-1/8" WAS 5-3/32" AND 4-7/32" WAS 4-3/16"	DATE: 11-21-91	SHEET: 1 OF 2	DRAWING NUMBER
E	07-17-19	BRC	DS	000299	UPDATED TO REFLECT CHANGE TO 3000 LB. COUPLING; ADDED -S6 OPTION	DRN. BY: RC	CHKD. BY:	C-15854
						SCALE: NONE	REVISION: E	