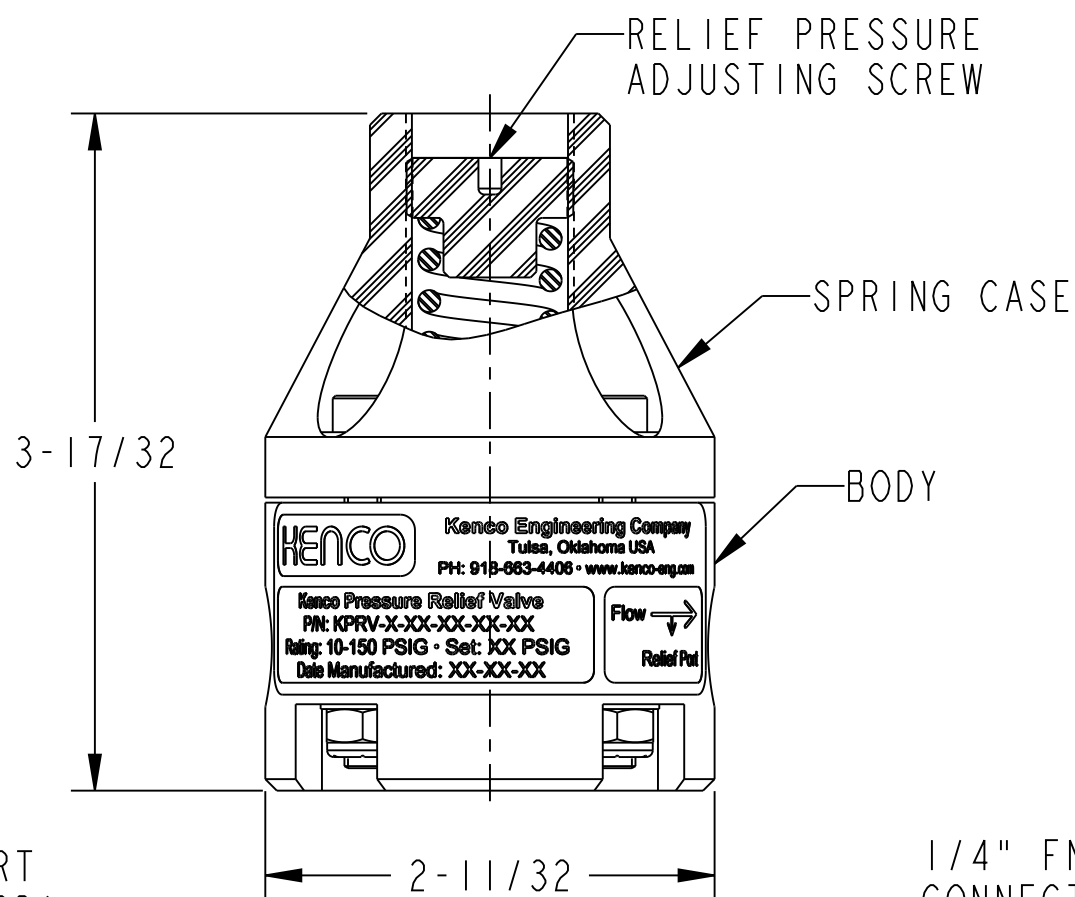
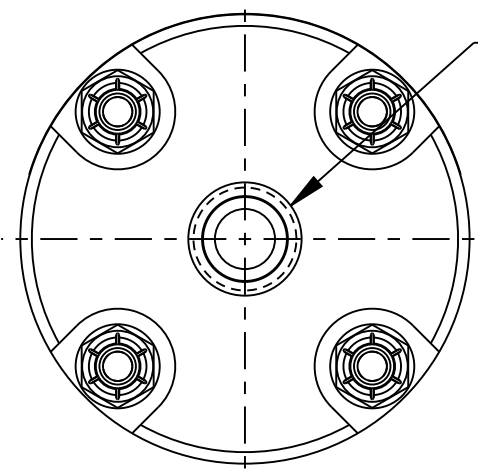
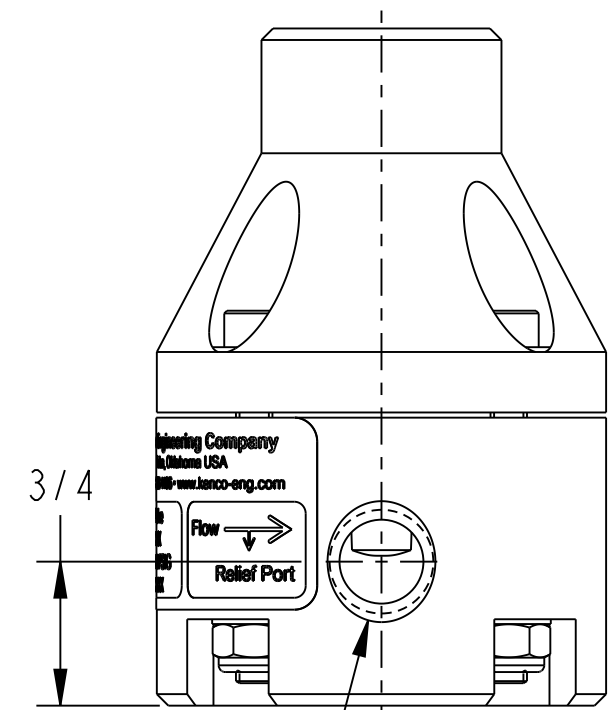


1/4" FNPT INLET PORT CONNECTION (STANDARD)  
(1/4" SOCKET WELD OPTIONAL)



1/4" FNPT OUTLET PORT CONNECTION (STANDARD)  
(1/4" SOCKET WELD OPTIONAL)



1/4" FNPT RELIEF PORT CONNECTION (STANDARD)  
(1/4" SOCKET WELD OPTIONAL)

RELIEF PRESSURE ADJUSTMENT RANGE: 0 TO 150 PSI  
RELIEF PRESSURE FACTORY SETTING: 50 PSI

WETTED MATERIALS:

BODY: PVC  
DIAPHRAGM: TEFLON (WETTED)/EPDM (NON-WETTED)

NON-WETTED MATERIALS:

SPRING CASE: PVC  
RELIEF PRESSURE ADJUSTING SCREW: PVC  
SPRING: ZINC PLATED SPRING STEEL  
NUTS, BOLTS & WASHERS: 18-8 STAINLESS STEEL

MODEL NUMBER:

KPRV-T-25-P-P-TE (THREADED CONNECTIONS)  
KPRV-S-25-P-P-TE (SOCKET WELD CONNECTIONS)

				DIM'S IN INCHES TOLERANCES UNLESS OTHERWISE SPECIFIED.		Kenco ENGINEERING Tulsa, Oklahoma USA		MATERIAL: SEE B/M	
				ANGULAR ±1/2°		RELEASE LEVEL: RELEASED		DRAWING CREATED IN PRO/ENGINEER	
				FRACTIONAL ±1/64"		TITLE: VALVE, KPRV RELIEF, 1/4", BOLTED		DRAWING NUMBER	
				(X.X) ±0.015"		DRN. BY: BRC		SCALE: 1.000	
				(X.XX) ±0.010"		CHKD. BY: KLM		REVISION: A	
				(X.XXX) ±0.005"		DATE: 05/15/15		SHEET 1 OF 3	
				MACH FILLET RAD: .031"				73558	
				125 MAX. FINISH, ALL MACHINED SURFACES.					
<p><b>PROPRIETARY:</b> THIS DRAWING AND THE INFORMATION CONTAINED HEREIN IS PROPRIETARY TO KENCO ENGINEERING CO. AND SHALL NOT BE REPRODUCED, COPIED, OR DISCLOSED IN WHOLE OR IN PART, OR USED FOR MANUFACTURE OR FOR ANY OTHER PURPOSE WITHOUT THE WRITTEN PERMISSION OF KENCO ENGINEERING.</p>									