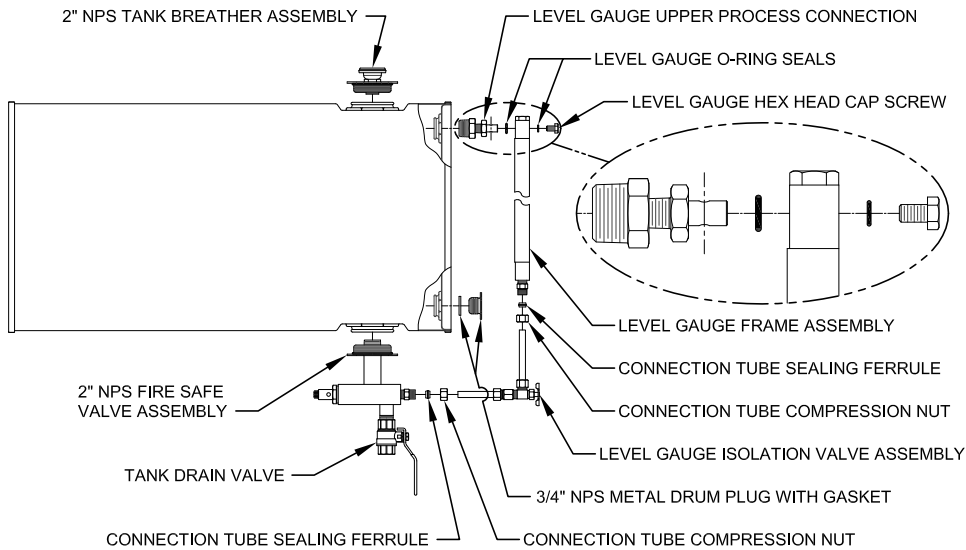
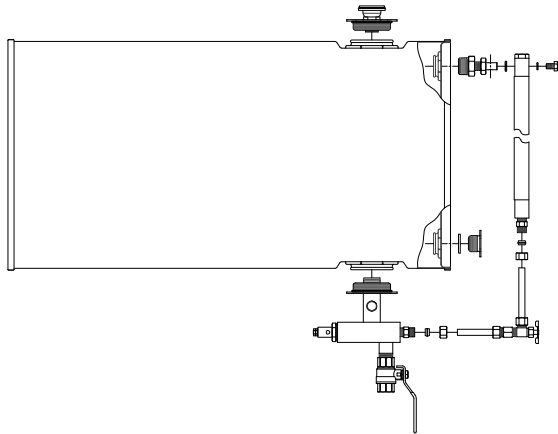


**KENCO 16, 30 AND 55 GALLON FIRE SAFE TANKS WITH -44-IV LEVEL GAUGE OPTION
(ILLUSTRATIONS)**



MODEL K16G-FS-44-IV, K30G-FS-44-IV & K55G-FS-44-IV



MODEL K16G-FS-CD-44-IV, K30G-FS-CD-44-IV & K55G-FS-CD-44-IV

**KENCO 16, 30 AND 55 GALLON FIRE SAFE TANKS WITH -44-IV LEVEL GAUGE OPTION
(ASSEMBLY INSTRUCTIONS)**

1. KENCO TANKS SHIP WITH A TANK KIT CONTAINING ALL THE PARTS NECESSARY TO ASSEMBLE THE MODEL OPTION ORDERED. SEE ILLUSTRATIONS ON LEFT-HAND SIDE OF SHEET FOR VARIOUS MODEL CONFIGURATIONS.
2. MAKE SURE TANK IS THE SIZE ORDERED.
3. MAKE SURE TANK KIT CONTAINS THE PARTS REQUIRED TO BUILD THE TANK MODEL OPTION REQUESTED (EXAMPLES: K16G-FS-44-IV-TK AND K16G-FS-CD-44-IV-TK).
4. REMOVE THE EXISTING TANK PORT THREADED PLUGS.
5. INSTALL 3/4" NPS METAL DRUM PLUG INTO THE LOWER PORT ON FRONT FACE OF TANK.
NOTE: DRUM PLUG IS EQUIPPED WITH A GASKET THAT DOES NOT REQUIRE AN EXCESSIVE AMOUNT OF TORQUE TO ACHIEVE A POSITIVE SEAL.
6. INSTALL 2" NPS FIRE SAFE VALVE ASSEMBLY AND ORIENT AS SHOWN IN ILLUSTRATIONS.
NOTE: 2" NPS DRUM PLUG IS EQUIPPED WITH A SEAL THAT DOES NOT REQUIRE AN EXCESSIVE AMOUNT OF TORQUE TO ACHIEVE A POSITIVE SEAL.
7. THE LEVEL GAUGE IS SHIPPED COMPLETELY ASSEMBLED AND IT WILL BE NECESSARY TO REMOVE THE UPPER PROCESS CONNECTION BY UNSCREWING THE HEX HEAD CAP SCREW AS SHOWN IN ILLUSTRATIONS.
8. PREPARE PIPE THREADS ON UPPER PROCESS CONNECTION FOR INSTALLATION BY WRAPPING WITH PTFE TAPE SUPPLIED WITH TANK KIT.
9. INSTALL UPPER PROCESS CONNECTION INTO THE UPPER PORT ON FRONT FACE OF TANK SO THAT CROSS-DRILLED HOLE IS POINTING TOWARD BOTTOM OF TANK.
NOTE: CROSS-DRILLED HOLE IS ILLUSTRATED BY VERTICAL CENTERLINE RUNNING THROUGH CONNECTION.
10. SLIDE LEVEL GAUGE O-RING SEAL ONTO SMOOTH SECTION OF UPPER PROCESS CONNECTION.
11. REMOVE COMPRESSION NUT AND SEALING FERRULE FROM LOWER END OF LEVEL GAUGE AND FRONT FACE OF FIRE SAFE VALVE ASSEMBLY.
12. PICK UP LEVEL GAUGE ISOLATION VALVE ASSEMBLY AND SLIDE COMPRESSION NUTS AND SEALING FERRULES ON CONNECTION TUBES AS SHOWN.
13. INSERT ISOLATION VALVE CONNECTION TUBE INTO COMPRESSION FITTING ON FRONT FACE OF FIRE SAFE VALVE ASSEMBLY AND LOOSELY TIGHTEN COMPRESSION NUT.
14. SLIDE COMPRESSION FITTING ON LOWER END OF LEVEL GAUGE OVER OTHER ISOLATION VALVE CONNECTION TUBE AND LOOSELY TIGHTEN COMPRESSION NUT.
15. ROTATE AND SLIDE LEVEL GAUGE UNTIL HOLE IN UPPER END OF FRAME FALLS ONTO SMOOTH SECTION OF UPPER PROCESS CONNECTION.
NOTE: WHEN THE LEVEL GAUGE FRAME ASSEMBLY IS POSITIONED FLAT AGAINST THE HEXAGON FACE OF THE UPPER PROCESS CONNECTION, MAKE SURE THE O-RING SEAL IS IN THE FACE SEAL COUNTERBORE ON THE BACK SIDE OF THE GAUGE FRAME CONNECTION BLOCK.
16. LINE UP LEVEL GAUGE WITH COMPRESSION FITTING ON FRONT FACE OF FIRE SAFE VALVE ASSEMBLY AND REINSTALL LEVEL GAUGE HEX HEAD CAP SCREW WITH O-RING SEAL INTO THE FRONT SIDE OF THE GAUGE FRAME UPPER CONNECTION BLOCK USING "LOCTITE 242" OR EQUIVALENT THREAD LOCKING COMPOUND.
NOTE: THE LEVEL GAUGE O-RING SEALS DO NOT REQUIRE AN EXCESSIVE AMOUNT OF TORQUE TO ACHIEVE A POSITIVE SEAL. THE LEVEL GAUGE UPPER PROCESS CONNECTION IS STANDARDLY NICKEL PLATED BRASS AND OVER TIGHTENING THE HEX HEAD CAP SCREW CAN STRIP OUT THE THREADS.
17. MAKE SURE LEVEL GAUGE FRAME ASSEMBLY IS PARALLEL WITH FACE OF TANK AND BEGIN TIGHTENING COMPRESSION NUTS (FIRE SAFE VALVE COMPRESSION NUT FIRST) TO ACHIEVE A POSITIVE SEAL.
IMPORTANT: PLACE A WRENCH ON LOWER CONNECTION BLOCK OF LEVEL GAUGE WHEN TIGHTENING GAUGE COMPRESSION NUT TO AVOID BENDING FRAME AND POSSIBLE DAMAGE TO GLASS SIGHT TUBE.
18. MOUNT TANK IN A HORIZONTAL POSITION WITH TANK DRAIN VALVE ON BOTTOM AS REQUIRED FOR YOUR APPLICATION.
NOTE: IT MAY BE NECESSARY TO INSTALL LEVEL GAUGE ONTO TANK AFTER MOUNTING TANK DEPENDING ON CLEARANCE ISSUES.
19. MAKE SURE TANK DRAIN VALVE IS IN THE CLOSED POSITION.
20. MAKE SURE THE LEVEL GAUGE ISOLATION VALVE IS IN THE OPEN POSITION.
21. FILL TANK WITH OIL FOR YOUR SERVICE THROUGH 2" NPS PORT ON TOP OF TANK AND CHECK FOR LEAKS.
22. TIGHTEN UP ANY CONNECTIONS THAT EXHIBIT ANY SIGN OF A LEAK.
23. INSTALL 2" NPS TANK BREATHER ASSEMBLY ON TOP OF TANK.
NOTE: 2" NPS DRUM PLUG IS EQUIPPED WITH A SEAL THAT DOES NOT REQUIRE AN EXCESSIVE AMOUNT OF TORQUE TO ACHIEVE A POSITIVE SEAL.
24. INSTALL TANK DRAIN VALVE PIPING AS REQUIRED FOR YOUR APPLICATION.
25. OPEN TANK DRAIN VALVE TO CHECK PIPING FOR LEAKS AND TO PUT TANK INTO SERVICE.

SIGHT TUBE REPLACEMENT INSTRUCTIONS

1. MAKE SURE YOU HAVE THE CORRECT SIGHT TUBE REPAIR KIT.
2. CLOSE THE LEVEL GAUGE ISOLATION VALVE.
3. MAKE SURE OIL LEVEL IN TANK IS BELOW THE TOP OF VISUAL INDICATION IN LEVEL GAUGE.
4. REMOVE LEVEL GAUGE FRAME ASSEMBLY BY UNSCREWING THE LEVEL GAUGE HEX HEAD CAP SCREW AND COMPRESSION NUT LOCATED ON LOWER END OF LEVEL GAUGE.
5. INSTALL REPLACEMENT SIGHT TUBE AND O-RING SEALS PER INSTRUCTIONS PROVIDED WITH REPAIR KIT.
6. REINSTALL LEVEL GAUGE.
7. OPEN LEVEL GAUGE ISOLATION VALVE.
8. CHECK LEVEL GAUGE FOR LEAKS.
9. TIGHTEN CONNECTIONS SLIGHTLY TO STOP LEAK IF REQUIRED.