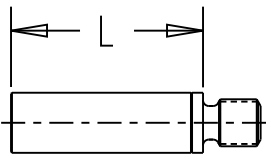
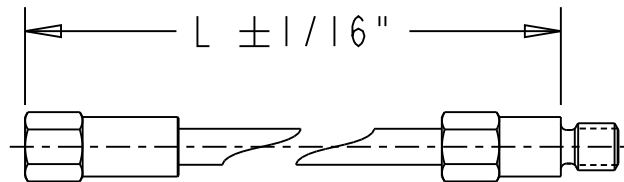


PART NO. 58040



PART NO. 58770



PART NO. 58767-XX

| PART NO. | DIM. L | MIN. OPERATING SPECIFIC GRAVITY |
|-----------|---------------|---------------------------------|
| 58040 | 0.690" ±.005" | 0.66 |
| 58770 | 1.00" ±.010" | 0.69 |
| 58767-2 | 2.0" ±1/16" | 0.77 |
| 58767-2.5 | 2.5" ±1/16" | 0.79 |
| 58767-3 | 3.0" ± 1/16" | 0.81 |
| 58767-4 | 4.0" ± 1/16" | 0.85 |
| 58767-5 | 5.0" ± 1/16" | 0.88 |
| 58767-6 | 6.0" ± 1/16" | 0.90 |
| 58767-7 | 7.0" ± 1/16" | 0.92 |
| 58767-8 | 8.0" ± 1/16" | 0.95 |
| 58767-9 | 9.0" ± 1/16" | 0.96 |
| 58767-10 | 10.0" ± 1/16" | 0.98 |
| 58767-11 | 11.0" ± 1/16" | 1.0 |
| 58767-12 | 12.0" ± 1/16" | 1.01 |

MATERIAL: 316 STAINLESS STEEL

| | | | | | | | | | |
|------|-----------------|------------|---|--|---|--|--------------|-------|----------------|
| | | | DIM'S IN INCHES TOLERANCES UNLESS OTHERWISE SPECIFIED. | | KENCO ENGINEERING Tulsa, Oklahoma USA | MATERIAL: | NOTED | | |
| | | | | | | RELEASE LEVEL: | RELEASED | | |
| A | 11/10/11 N/A | BRC RDM | RELEASED DESCRIPTION | | | DRAWING CREATED IN PRO/ENGINEER | | | |
| REV. | DATE | DRN. | | | | TITLE: FLOAT EXTENSIONS, OPTIONAL FOR KPFS AND KEFS | | | |
| | ECN | CHKD. | ANGULAR ±1/2° FRACTIONAL ±1/64" (X.X) ±0.015" (X.XX) ±0.010" (X.XXX) ±0.005" MACH FILLET RAD-.031" 125 MAX. FINISH, ALL MACHINED SURFACES. | | DRN. BY: | BRC | SCALE: | 1.000 | DRAWING NUMBER |
| | | | | | CHKD. BY: | RDM | REVISION: | A | 63980 |
| | | | | | DATE: | 11-10-11 | SHEET 1 OF 1 | | |

PROPRIETARY: THIS DRAWING AND THE INFORMATION CONTAINED HEREIN IS PROPRIETARY TO KENCO ENGINEERING CO. AND SHALL NOT BE REPRODUCED, COPIED, OR DISCLOSED IN WHOLE OR IN PART, OR USED FOR MANUFACTURE OR FOR ANY OTHER PURPOSE WITHOUT THE WRITTEN PERMISSION OF KENCO ENGINEERING.