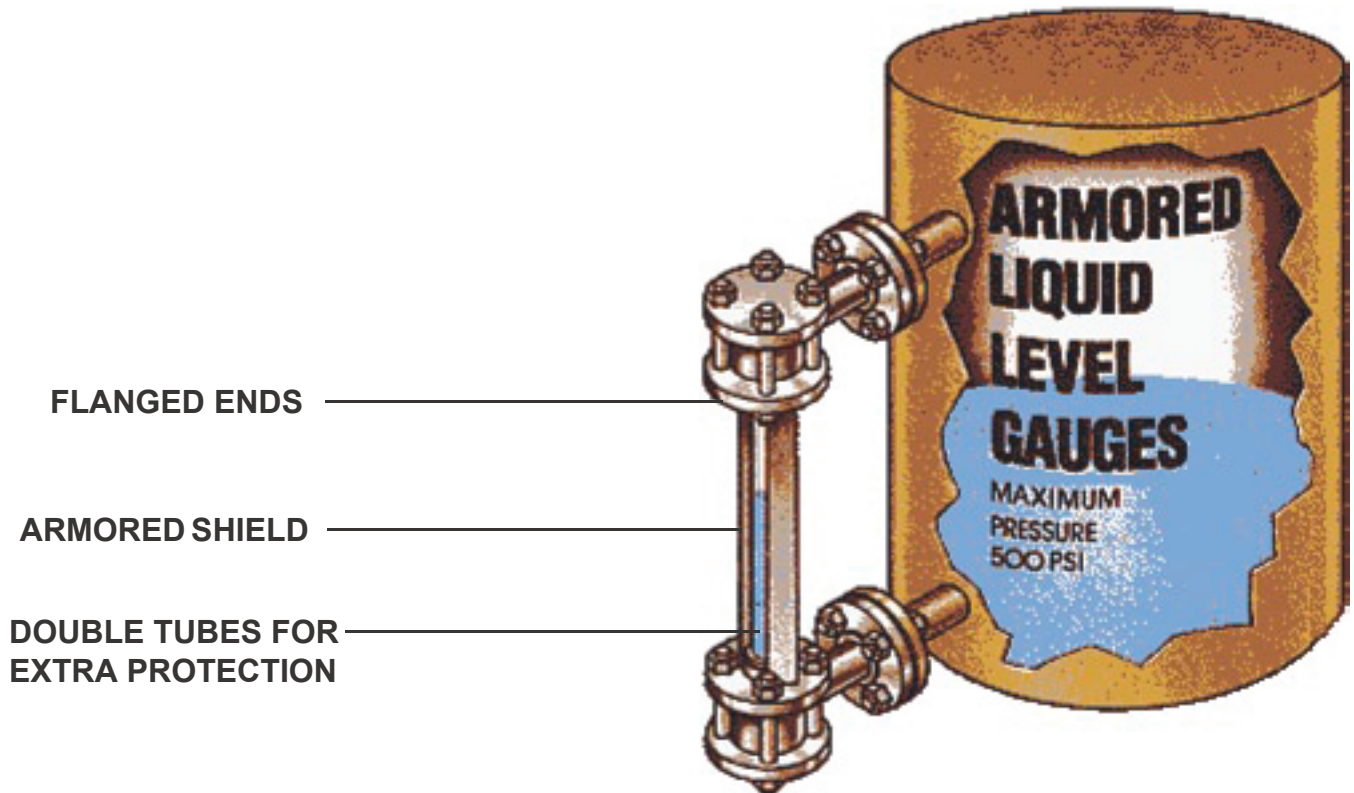




Excellence in Engineering & Manufacturing

ESP/ST SERIES ARMORED LIQUID LEVEL GAUGES



ENGINEERED LIQUID LEVEL SOLUTIONS

Represented By:

KENCO Sales Offices

Tulsa

PO Box 470426

Tulsa, OK 74147

phone: 918 663 4406

fax: 918 663 4480

www.kenco-eng.com

email: info@kenco-eng.com

Baton Rouge

11616 Industriplex, ste. 7

Baton Rouge, LA 70809

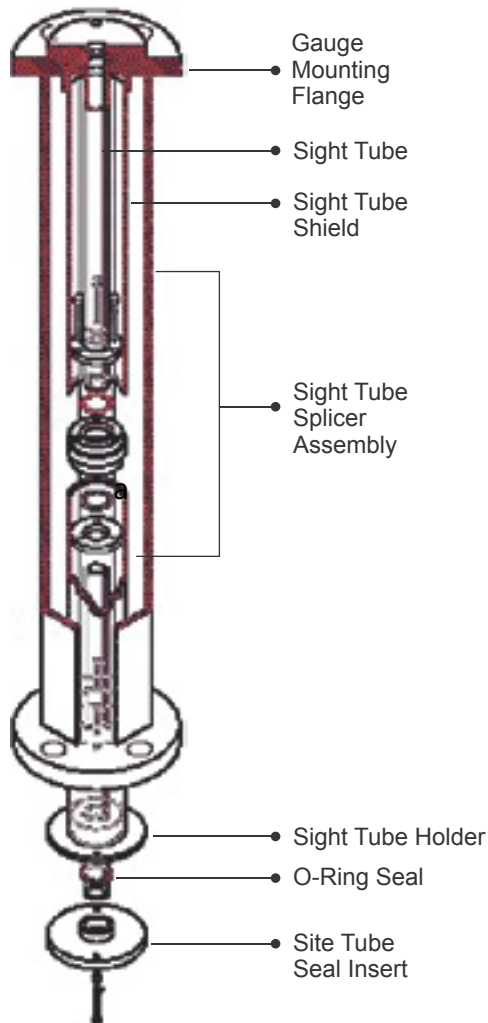
phone: 504 755 1912

fax 504 755 1913

www.kenco-eng.com

email: kenco-la@kenco-eng.com

Armored Liquid Level Gauges



Kenco Armored Liquid Level Gauges

are designed to solve the following problems in the handling of corrosive fluids:

1. Three parts come into contact with the liquid:
 - a. O-ring
 - b. Glass (inner tube)
 - c. Glass tube holder (PTFE)
2. The level gauge will operate in a medium pressure range up to 500 psi.
3. Extra protection from an armored shield and outside tube of polycarbonate to protect the inner tube from breakage.

CONSTRUCTION FEATURES

ARMORED GAUGE FRAME

The process piping is supported by the gauge frame. This frame protects the glass tube from mechanical stress and impact. The frame is available in powder epoxy-coated carbon steel, stainless steel, fiberglass, or PVC.

SIGHT TUBE HOLDER

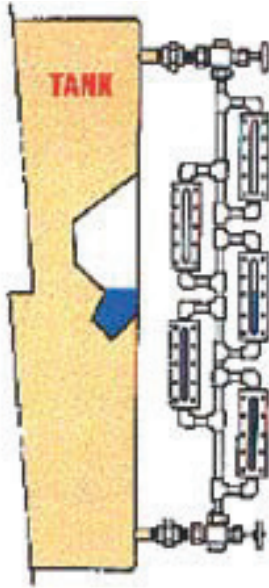
The tube holders isolate the process fluid from the gauge frame. They are normally provided in PTFE. Other materials are available, such as type 316 SS or Alloy 20.

SIGHT TUBE

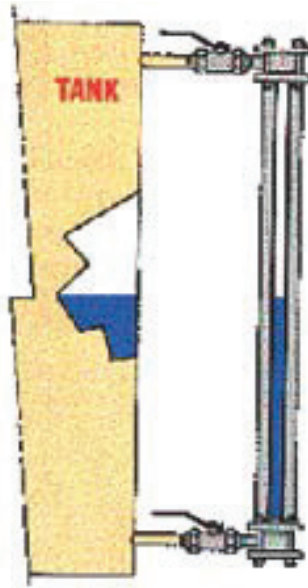
Sight tube -- Standard material is borosilicate glass, however, any clear tubing may be used.

SIGHT TUBE SHIELD

Outer protective tube is normally supplied in clear polycarbonate tubing which has a high impact strength (Izod impact range: 12-16 feet, Lb./in.). Other materials may be supplied.



**FLAT GLASS
LEVEL GAUGES**



**TUBULAR GLASS
LEVEL GAUGES**

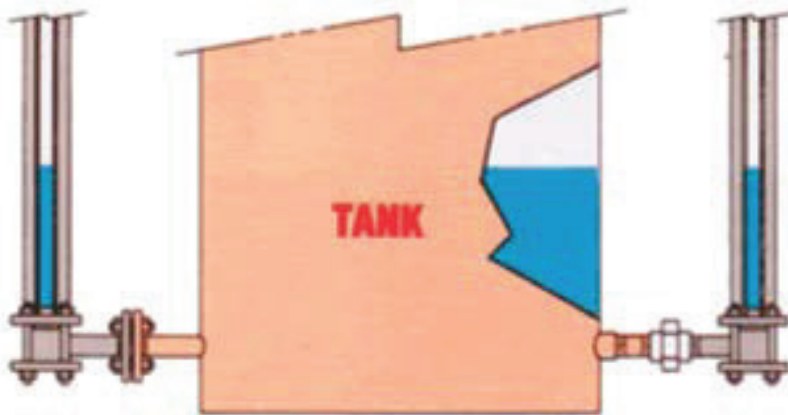
LOWER INSTALLATION COSTS

One piece gauge is easily installed. Does not require multiple tank connections or additional piping required with flat glass type level gauges.

EASY TO READ LIQUID LEVEL

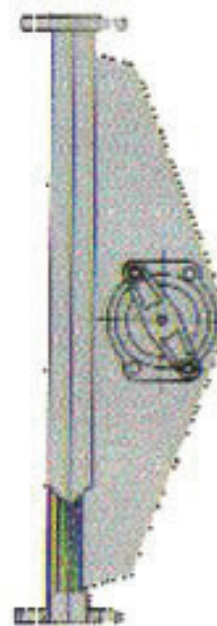
One piece gauge has no blind spots and the slotted frame provides see-through viewing of the liquid.

ACCESSORIES



**Flanged 90° Connectors
Available with PTFE Lining**

**Threaded 90°
Connectors**



Illuminators



**Height Scales
Lexan or 304SS**

APPLICATION WORKSHEET

COMPANY: _____ **CITY:** _____ **STATE:** _____ **ZIP:** _____
REQUESTED BY: _____ **PHONE:** _____
ADDRESS: _____ **FAX:** _____
LIQUID IN TANK: _____

—
 —
 —
 —

Gauge Style

ESP = Double
 Tube Gauge
 ST = Single
 Tube Gauge

Length (in inches)

- Center to Center
 dimension if
 supplied with
 90° connectors
 OR
 - Face to Face
 dimension if
 supplied without
 90° connectors

Frame Material

CS = Zinc Plated
 Carbon Steel
 S4 = 304 Stainless
 Steel
 S6 = 316 Stainless
 Steel
 PVC = PVC
 FG = Fiberglass
 Other (Please Specify)

Flange Size for Gauge

1 = 1" 150 Lb. Flange
 1.5 = 1.5" 150 Lb. Flange
 2 = 2" 150 Lb. Flange
 Other (Please Specify)

Sight Tube Material

HP = High Pressure
 Glass (Standard)
 HW = Heavy Wall Glass
 RL = Red Line Glass
 AC = Acrylic
 PVC = Transparent PVC
 PC = Polycarbonate
 FEP = FEP Tubing *
 Other (Please Specify)

—
 —
 —
 —

O-Ring Material

A = Aflas 150
 B = Buna-N
 EP = Ethylene Propylene
 K = Kalrez
 V = Fluorocarbon
 TE = FEP Encapsulated
 Silicone
 X = Other (Please Specify)

Maximum Working Pressure (PSIG)

Maximum Operating Temperature (°F)

90° Connectors

Y = Yes, please quote
 N = Not needed

90° Connection Size

N/A = Not Applicable
 .5T = 1/2" MNPT**
 .75T = 3/4" MNPT**
 1T = 1" MNPT**
 .75F = 3/4" 150# Flanges
 1F = 1" 150# Flanges
 1.5F = 1" - 1/2" 150# Flange
 2F = 2" 150# Flanges
 Other (Please Specify)

—
 —
 —

90° Connection Material

NA = Not Applicable
 CS = Zinc Plated Carbon Steel
 CST = PTFE Lined Carbon Steel***
 S4 = 304 Stainless Steel
 S4T = PTFE Lined 304 SS***
 S6 = 316 Stainless Steel
 S6T = PTFE Lined 316 SS***
 Other (Please Specify)

Option
Other Gauge Options

Option

LX = Polycarbonate Height Scale in feet, inches
 SS = Stainless Steel Height Scale in feet, inches
 XX = Custom Engraved Scale (describe in box below)
 I = Illuminator
 TVD = Threaded Vent and Drain (specify size) _____
 FVD = Flanged Vent and Drain (specify size) _____
 X = Other (describe in box below)

Option

COMMENTS:

Example: ESP-48-S6-1.5-RL-TE-175-100-Y-1.5F-S6-LX-1/2"TVD is a double tube gauge, with a center to center dimension of 48", frame material is 316 SS, 1.5" 150 LB. flanged connections, red-line glass, FEP Encapsulated Silicone O-rings, a maximum working pressure of 175 psig at 100°F, with 1.5" 150# flanged 316 SS 90 degree connectors, a polycarbonate height scale in feet/inches, and 1/2" FNPT vent and drain connections.

* FEP Tubing is only available on 1" ST models.

** Threaded connectors not available on PTFE lined 90° connectors

*** Flanges on PTFE lined 90° connectors must be the same size or smaller than the gauge flange size.