

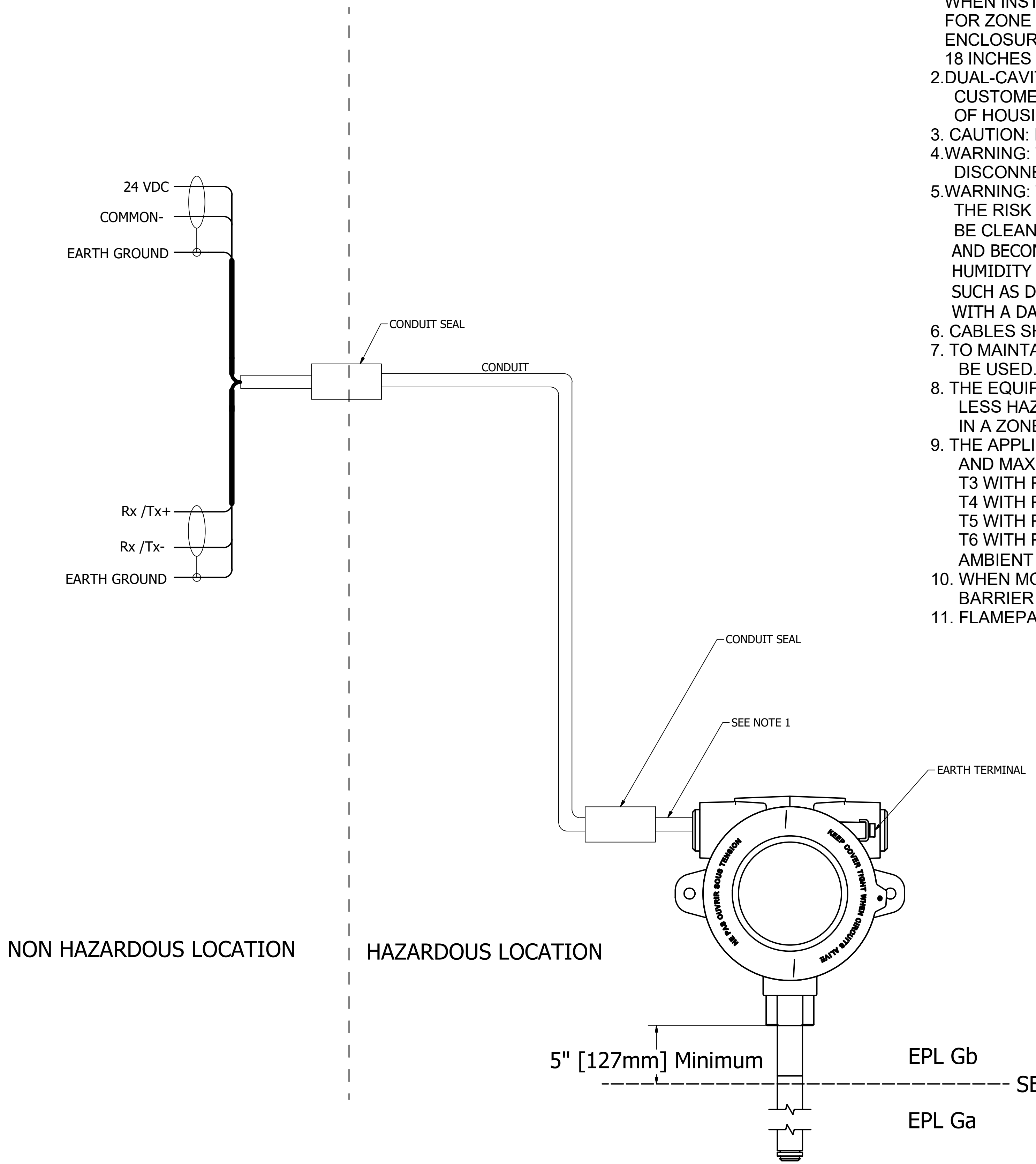


EXPLOSION PROOF  
 CL. I, DIV. 1, GR. BCD T6...T3  
 Ex db IIB+H2 T6...T3 Ga/Gb  
 Ta = -40°C to +71°C ; IP65

FM18CA0131X

NOTES:

1. ALL NATIONAL AND LOCAL CODES AND REGULATIONS MUST BE ADHERED TO WHEN INSTALLING THE LEVEL SENSOR IN HAZARDOUS ENVIRONMENTS. FOR ZONE INSTALLATIONS, A SEAL SHALL BE INSTALLED WITHIN 50mm OF THE ENCLOSURE. FOR DIVISION INSTALLATIONS, A SEAL SHALL BE INSTALLED WITHIN 18 INCHES OF THE ENCLOSURE.
2. DUAL-CAVITY ENCLOSURES: CUSTOMER CONNECTIONS WILL BE MADE AT TERMINAL BLOCK ON POWER SIDE OF HOUSING (NOT TO TERMINAL BLOCK ON INTERCONNECT BOARD). SEE FIGURE 2 ON PAGE 2
3. CAUTION: FLEXIBLE GAUGES HAVE A MINIMUM BEND RADIUS OF 381mm(15")
4. WARNING: TO PREVENT IGNITION OF FLAMMABLE OR COMBUSTIBLE ATMOSPHERES, DISCONNECT POWER BEFORE SERVICING
5. WARNING: THE EQUIPMENT CONTAINS NON-METALLIC ENCLOSURE AND PROCESS PARTS, TO PREVENT THE RISK OF ELECTROSTATIC SPARKING. THE NON-METALLIC SURFACE AND PROCESS PARTS SHOULD ONLY BE CLEANED WITH A DAMP CLOTH. PAINTED SURFACE OF THE EQUIPMENT MAY STORE ELECTROSTATIC CHARGE AND BECOME A SOURCE OF IGNITION IN APPLICATIONS WITH A LOW RELATIVE HUMIDITY <~30% RELATIVE HUMIDITY WHERE THE PAINTED SURFACE IS RELATIVELY FREE OF SURFACE CONTAMINATION SUCH AS DIRT, DUST OR OIL. CLEANING OF THE PAINTED SURFACE SHOULD ONLY BE DONE WITH A DAMP CLOTH.
6. CABLES SHALL BE RATED > 5C ABOVE MAXIMUM AMBIENT TEMPERATURE.
7. TO MAINTAIN THE INGRESS PROTECTION RATING OF IP65, TEFLON TAPE (3 WRAPS) OR PIPE DOPE SHALL BE USED. REFER TO INSTALLATION INSTRUCTIONS.
8. THE EQUIPMENT CAN BE INSTALLED IN THE BOUNDARY WALL BETWEEN A ZONE 0 AREA AND THE LESS HAZARDOUS AREA, ZONE 1. IN THIS CONFIGURATION, THE PROCESS CONNECTION IS INSTALLED IN A ZONE 0 AREA, WHILE THE TRANSMITTER HOUSING IS INSTALLED IN A ZONE 1 AREA.
9. THE APPLICABLE TEMPERATURE CLASS OF THE EQUIPMENT, AMBIENT TEMPERATURE RANGE, AND MAXIMUM PROCESS TEMPERATURE OF THE EQUIPMENT IS AS FOLLOWS;  
 T3 WITH PROCESS TEMPERATURE RANGE OF -40°C to +150°C  
 T4 WITH PROCESS TEMPERATURE RANGE OF -40°C to +135°C  
 T5 WITH PROCESS TEMPERATURE RANGE OF -40°C to +100°C  
 T6 WITH PROCESS TEMPERATURE RANGE OF -40°C to +85°C  
 AMBIENT TEMPERATURE RANGE -40°C ≤ Ta ≤ +71°C
10. WHEN MOUNTING ON A MAGNETIC LEVEL GAUGE MAKE SURE THE ELECTRONIC HEAD AND PRESSURE BARRIER HAVE A MINIMUM SPACING OF 5 INCHES. SEE INSTALLATION MANUAL FOR DETAIL
11. FLAMEPATHS ARE NOT FOR REPAIR



\*\*\*NO REVISIONS SHALL BE MADE WITHOUT THE NOTIFICATION TO APPROVAL AGENCY(S).\*\*\*

REV	ECO #	DESCRIPTION	TITLE	BY	DATE
A	8193	RELEASE TO PRODUCTION	(ACP) INSTALLATION DWG LP DIGITAL EXPLOSION PROOF CANADA	MS	4/10/18
PROPRIETARY DATA THE INFORMATION AND DESIGN(S) DISCLOSED HEREIN ARE THE PROPERTY OF KENCO ENGINEERING AND MAY NOT BE USED, REPRODUCED OR DISCLOSED IN ANY FORM EXCEPT AS GRANTED IN WRITING BY KENCO ENGINEERING. THIS RESTRICTION EXCLUDES INFORMATION THAT IS IN THE PUBLIC DOMAIN OR WAS LEGITIMATELY IN THE PRIOR POSSESSION OF THE RECIPIENT.			UNLESS OTHERWISE SPECIFIED TOLERANCES 0 PLACES 1 PLACE ANGLES MM ± 0.5 MM ± 0.1 ± 1°	RENCOC 10001 E 54th ST, TULSA, OK 74146 SIZE DWG NO. 651552-12 FIRST ANGLE PRODUCT LINE LEVEL DRAWN BY: MS SCALE: N/A METRIC SHEET 1 OF 3	

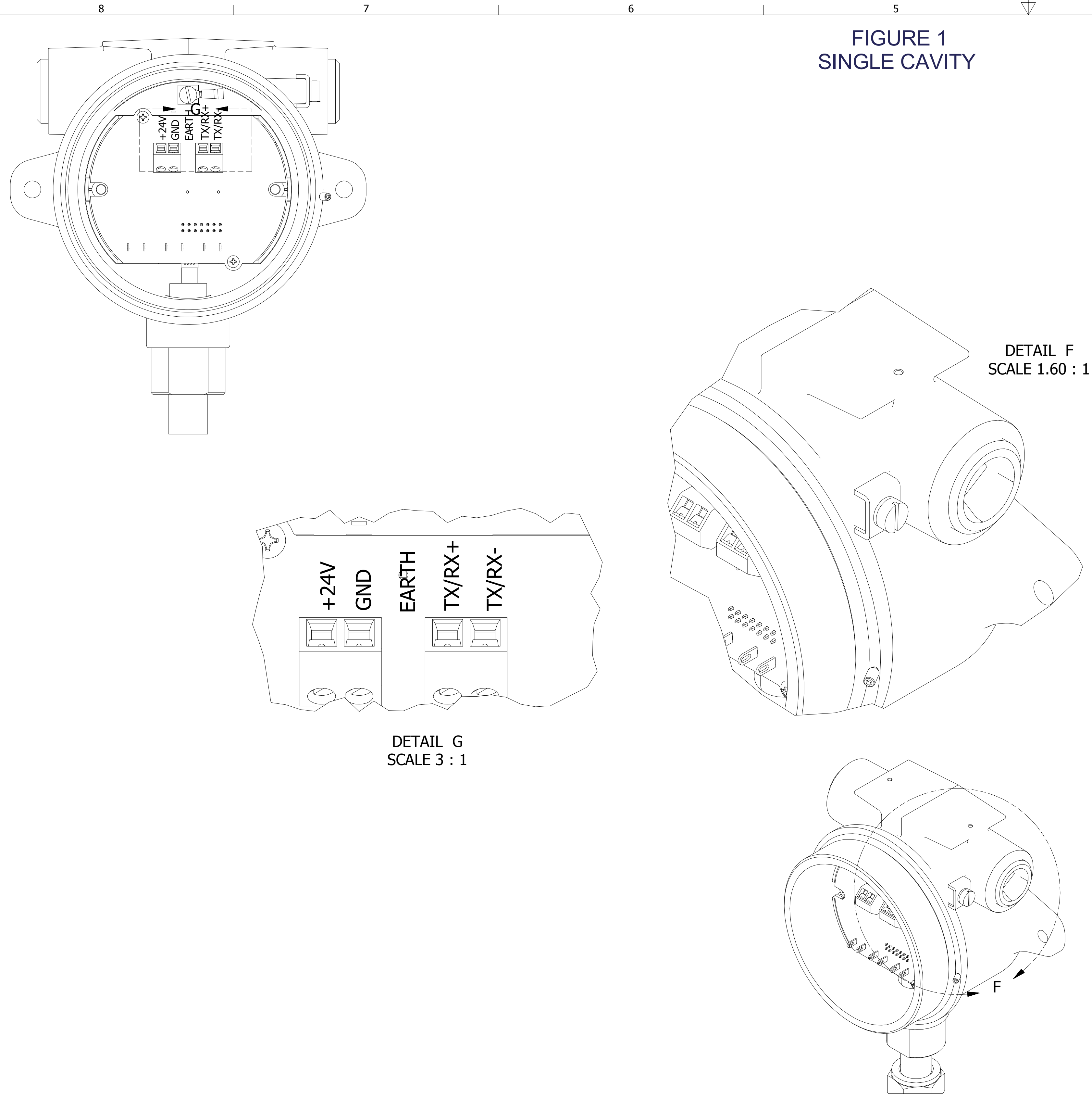


FIGURE 1  
SINGLE CAVITY

DETAIL F  
SCALE 1.60 : 1

DETAIL G  
SCALE 3 : 1

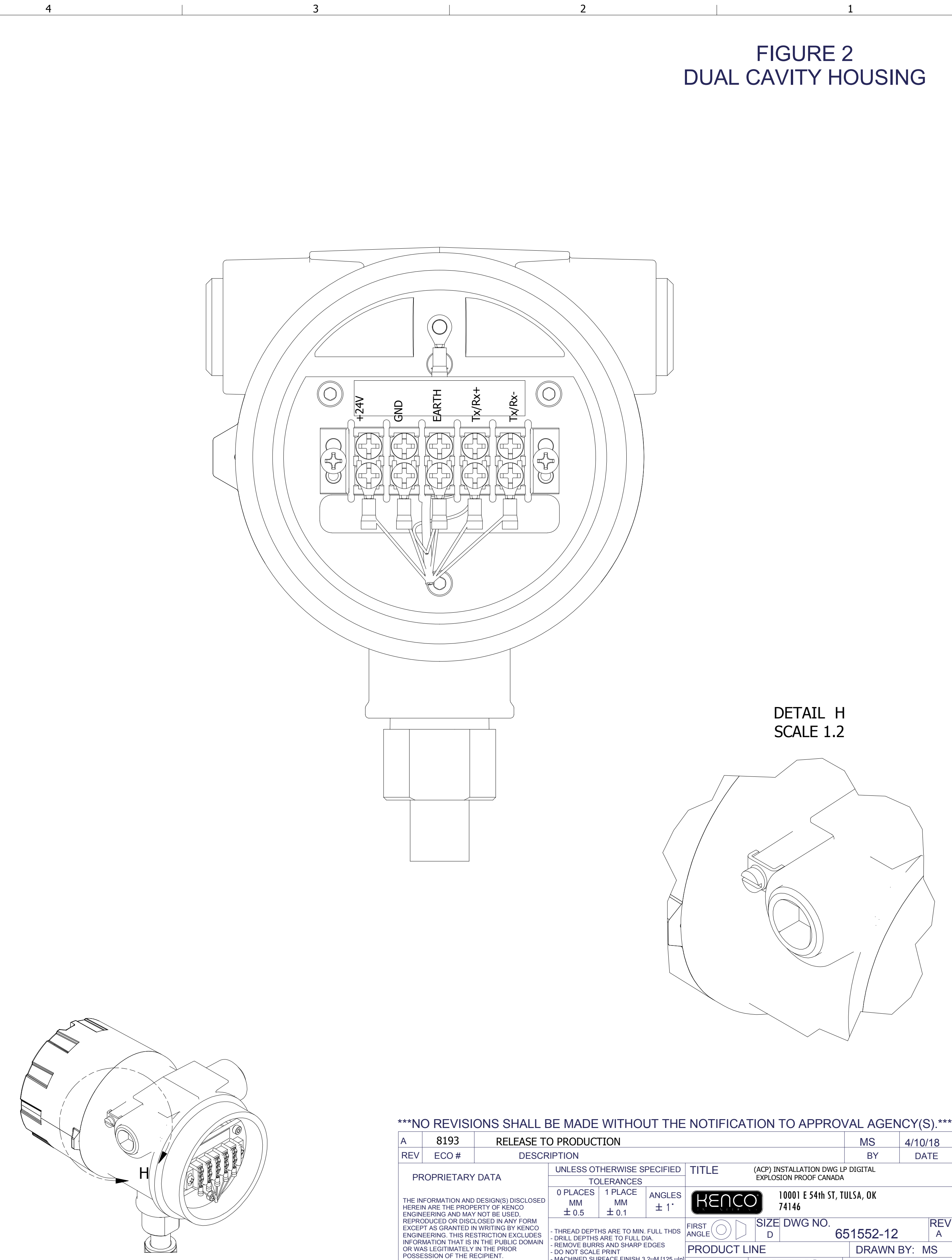


FIGURE 2  
DUAL CAVITY HOUSING

DETAIL H  
SCALE 1.2

NOTES:

1. THE CUSTOMER SHOULD CONNECT THE OUTSIDE GROUND LUG TO THE SAFETY EARTHING GROUND SYSTEM

WARNING:

FOR ZONE INSTALLATIONS, A SEAL SHALL BE INSTALLED WITHIN 50mm OF THE ENCLOSURE. FOR DIVISION INSTALLATIONS, A SEAL SHALL BE INSTALLED WITHIN 18 INCHES OF THE ENCLOSURE.

\*\*\*NO REVISIONS SHALL BE MADE WITHOUT THE NOTIFICATION TO APPROVAL AGENCY(S).\*\*\*



A	8193	RELEASE TO PRODUCTION	MS	4/10/18	
REV	ECO #	DESCRIPTION	BY	DATE	
PROPRIETARY DATA		UNLESS OTHERWISE SPECIFIED	TITLE (ACP) INSTALLATION DWG LP DIGITAL EXPLOSION PROOF CANADA		
<small>THE INFORMATION AND DESIGN(S) DISCLOSED HEREIN ARE THE PROPERTY OF KENCO ENGINEERING AND MAY NOT BE USED, REPRODUCED OR DISCLOSED IN ANY FORM EXCEPT AS GRANTED IN WRITING BY KENCO ENGINEERING. THIS RESTRICTION EXCLUDES INFORMATION THAT IS IN THE PUBLIC DOMAIN OR WAS LEGITIMATELY IN THE PRIOR POSSESSION OF THE RECIPIENT.</small>		TOLERANCES	10001 E 54th ST, TULSA, OK 74146		
		0 PLACES	1 PLACE	ANGLES	FIRST ANGLE  SIZE DWG NO. 651552-12 REV A
		MM ± 0.5	MM ± 0.1	± 1°	
		<small>- THREAD DEPTHS ARE TO MIN. FULL THDS - DRILL DEPTHS ARE TO FULL DIA. - REMOVE BURRS AND SHARP EDGES - DO NOT SCALE PRINT - MACHINED SURFACE FINISH 3.2µM [125 µin]</small>	PRODUCT LINE	DRAWN BY: MS	
		SCALE:	METRIC	SHEET 2 OF 3	



**NOTES:**

1. La réglementation doit être respectée suivant les codes locaux et nationaux  
 LORS D'INSTALLATION DU CAPTEUR DE NIVEAU DANS DES ENVIRONNEMENTS DANGEREUX.  
 POUR INSTALLATIONS DE ZONE, UN SORTIE EST INSTALLÉ DANS LES 50 mm DE L'ENCEINTE.  
 POUR INSTALLATIONS DE DIVISION ALE SORTIE EST INSTALLÉ DANS LES 18 POUCES DE L'ENCEINTE
2. ENCEINTES à cavité double : Les raccordements clients, seront effectués au bornier d'alimentation sur le côté du LOGEMENT boîtier (pas au bornier carte d'interconnexion)
3. ATTENTION: LES INSTRUMENTS FLEXIBLES AVEC UN RADIODE MINIMUM DE 381mm (15 ")
4. ATTENTION: Pour éviter l'inflammation d'atmosphères inflammables ou combustibles,  
 DÉBRANCHEZ L'ALIMENTATION AVANT D'INTERVENIR
5. AVERTISSEMENT: L'ÉQUIPEMENT CONTENUE DES PIÈCES ET PROCÉDÉS NON-METALLIQUES POUR PRÉVENIR  
 LE RISQUE D'ÉCLAIRAGE ÉLECTROSTATIQUE. LA SURFACE ET LES PIÈCES DE PROCÉDURE NON MÉTALLIQUES DOIVENT SEULEMENT  
 EFFECTEZ UN PANNEAU DE PLAISIR. LA SURFACE PEINTÉE DE L'ÉQUIPEMENT PEUT CONSERVER LE CHARGE ÉLECTROSTATIQUE  
 ET DEVENIR UNE SOURCE D'ALLUMAGE DANS DES APPLICATIONS AVEC UNE HUMIDITÉ BASSE RELATIVE <~ 30% RELATIVE  
 HUMIDITE OÙ LA SURFACE PEINTURE EST RELATIVEMENT LIBRE DE CONTAMINATION DE SURFACE  
 TELS QUE LA VIANDE, LA POUSSIÈRE OU L'HUILE. LE NETTOYAGE DE LA SURFACE PEINTURE DOIT ÊTRE FAIT  
 AVEC UN PANNEAU DE PLAISIR.
6. CABLES doit être évalué > 5C DESSUS MAXIMUM TEMPERATURE AMBIANTE.
7. POUR MAINTENIR LA NOTATION DE PROTECTION DE INGRESS IP65, du ruban téflon (3 BANDES) ou PIPE DOPE DEVRA ÊTRE UTILISÉ. CONSULTER LES INSTRUCTIONS D'INSTALLATION.
8. L'ÉQUIPEMENT PEUT ÊTRE INSTALLÉ DANS LE MUR DE LIMITE ENTRE UNE ZONE 0 ET LA  
 ZONE MOINS DANGEREUSE, ZONE 1. DANS CETTE CONFIGURATION, LA CONNEXION DU PROCESSUS EST INSTALLEE  
 DANS UNE ZONE 0, LORSQUE LE BOITIER DE L'EMETTEUR EST INSTALLE DANS UNE ZONE DE LA ZONE 1
9. LA TEMPERATURE CLASSE APPLICABLE DE L'ÉQUIPEMENT , TEMPERATURE AMBIANTE RANGE,  
 ET MAXIMUM PROCESSUS TEMPERATURE DE L'APPAREIL EST CE QUI SUIIT ;  
 T3 WITH PROCESS TEMPERATURE RANGE OF -40°C to +150°C  
 T4 WITH PROCESS TEMPERATURE RANGE OF -40°C to +135°C  
 T5 WITH PROCESS TEMPERATURE RANGE OF -40°C to +100°C  
 T6 WITH PROCESS TEMPERATURE RANGE OF -40°C to +85°C  
 AMBIENT TEMPERATURE RANGE -40°C ≤ Ta ≤ +71°C
10. LORS DU MONTAGE SUR UNE JAUGE DE NIVEAU MAGNÉTIQUE, ASSUREZ-VOUS QUE LA TÊTE ÉLECTRONIQUE ET LA PRESSION  
 BARRIÈRE A UN ESPACEMENT MINIMUM DE 5 POUCES. VOIR LE MANUEL D'INSTALLATION POUR DETAIL
11. CHEMIN DE FLAMME NE SONT PAS À RÉPARER

\*\*\*NO REVISIONS SHALL BE MADE WITHOUT THE NOTIFICATION TO APPROVAL AGENCY(S).\*\*\*

A	8193	RELEASE FOR PRODUCTION	MS	4/10/18
REV	ECO #	DESCRIPTION	BY	DATE
PROPRIETARY DATA <small>THE INFORMATION AND DESIGN(S) DISCLOSED HEREIN ARE THE PROPERTY OF KENCO ENGINEERING AND MAY NOT BE USED, REPRODUCED OR DISCLOSED IN ANY FORM EXCEPT AS GRANTED IN WRITING BY KENCO ENGINEERING. THIS RESTRICTION EXCLUDES INFORMATION THAT IS IN THE PUBLIC DOMAIN OR WAS LEGITIMATELY IN THE PRIOR POSSESSION OF THE RECIPIENT.</small>		UNLESS OTHERWISE SPECIFIED TOLERANCES 0 PLACES   1 PLACE   ANGLES MM   MM   ° ± 0.5   ± 0.1   ± 1°	TITLE <small>(ACP) INSTALLATION DWG LP DIGITAL EXPLOSION PROOF CANADA</small>  10001 E 54th ST, TULSA, OK 74146	
		FIRST ANGLE 	SIZE DWG NO. D   651552-12	REV A
		PRODUCT LINE SCALE: METRIC	DRAWN BY: MS SHEET 3 OF 3	