

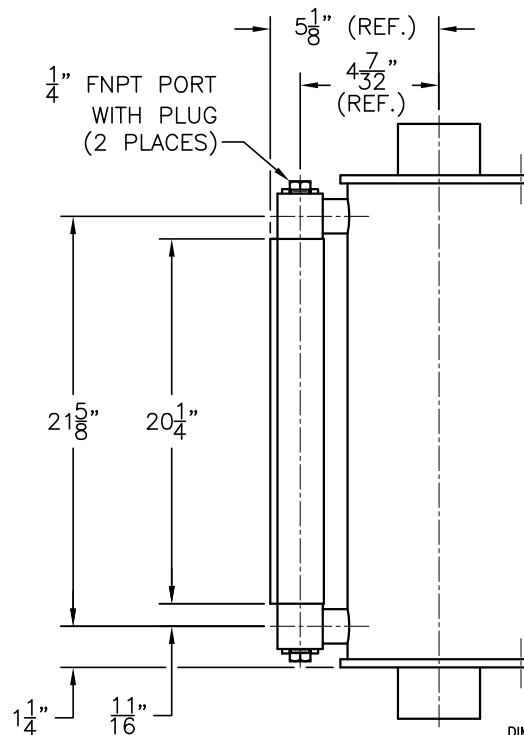
ORDERING INFORMATION			
MODEL NUMBER	TANK MATERIAL	SEAL MATERIAL	SCALE CALIBRATION
15856	CS OR SS	A, B, E, V OR T	SEE TABLE BELOW

EXAMPLE MODEL NUMBER: 15856-SS-V-GPH

SCALE CALIBRATION OPTIONS / DEFINITIONS	MAXIMUM PUMPING RATE/GAUGE VOLUME	SCALE CALIBRATION INCREMENT VALUE
GPH=GALLONS PER HOUR	100	2
LPH=LITERS PER HOUR	378.54	5
GPD=GALLONS PER DAY	2400	25
LPD=LITERS PER DAY	9084.96	100
GBV=GALLONS BY VOLUME	1.67	0.02
LBV=LITERS BY VOLUME	6.31	0.1

NOTE: GPH/LPH/GPD/LPD SCALES ARE BASED ON A ONE MINUTE TEST.

WETTED PARTS: TANK, SIGHT TUBE AND SIGHT TUBE O-RING SEALS



DIMENSIONAL NOTE:
DIMENSIONS ARE FOR REFERENCE
PURPOSES ONLY AND ARE SUBJECT TO
CHANGE AT ANY TIME WITHOUT NOTICE.

INFORMATION IS PROPRIETARY TO KENCO ENGINEERING CO.

PART NUMBER AND MATERIAL DESIGNATION:

DRAWING NO.	MODEL NO.	MATERIAL:
C-15856-CS	15856-CS	(CARBON STEEL TANK WITH 316/316L STAINLESS STEEL WETTED PARTS ON SIGHT GAUGE)
C-15856-SS	15856-SS	(316/316L STAINLESS STEEL WETTED PARTS)
C-15856-S6	15856-S6	(316/316L STAINLESS STEEL CONSTRUCTION)

REV.	DATE	BY	CHKD.	ECN	EXPLANATION:
C	05-03-10	DS	PAS	000008	REDRAWN; WAS HAND DWG.; ITEM 2 DESCRIPTION WAS PYREX GAUGE GLASS
D	01-15-13	EDM	KI	000186	ITEM 6 WAS P-13698; ADDED SHEET 2 OF 2; ADDED 13114-A
E	07-18-19	BRC	DS	000299	5-1/8" WAS 5-3/32" AND 4-7/32" WAS 4-3/16"
					UPDATED TO REFLECT CHANGE TO 3000 LB. COUPLING; ADDED -S6 OPTION

KENCO ENGINEERING COMPANY TULSA, OKLAHOMA		
POT, CALIBRATION (OUTLINE) MODEL NO. 15856		
DATE: 11-21-91	SHEET: 1 OF 2	DRAWING NUMBER
DRN. BY: RC	CHKD. BY:	C-15856
SCALE: NONE	REVISION: E	