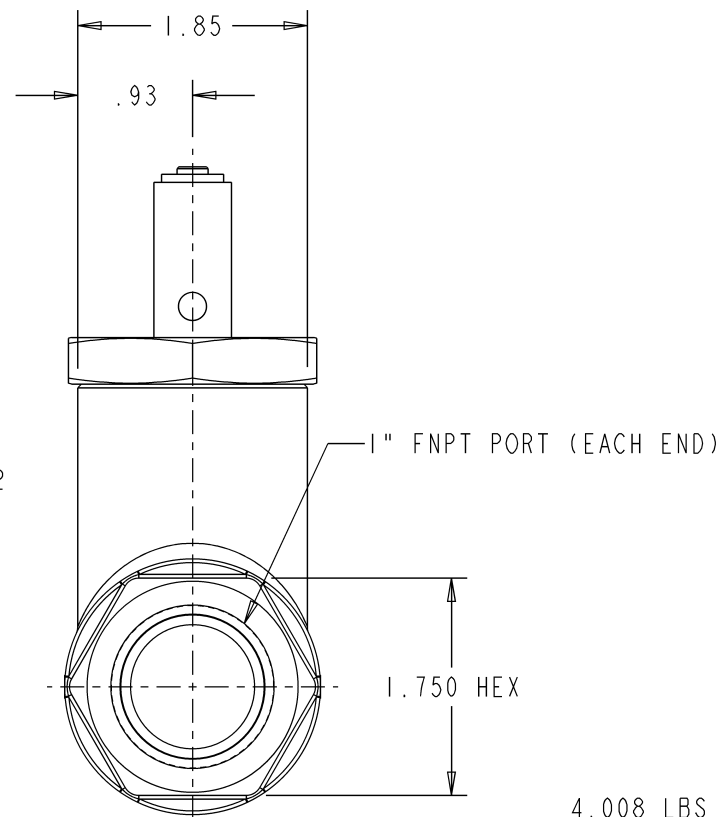
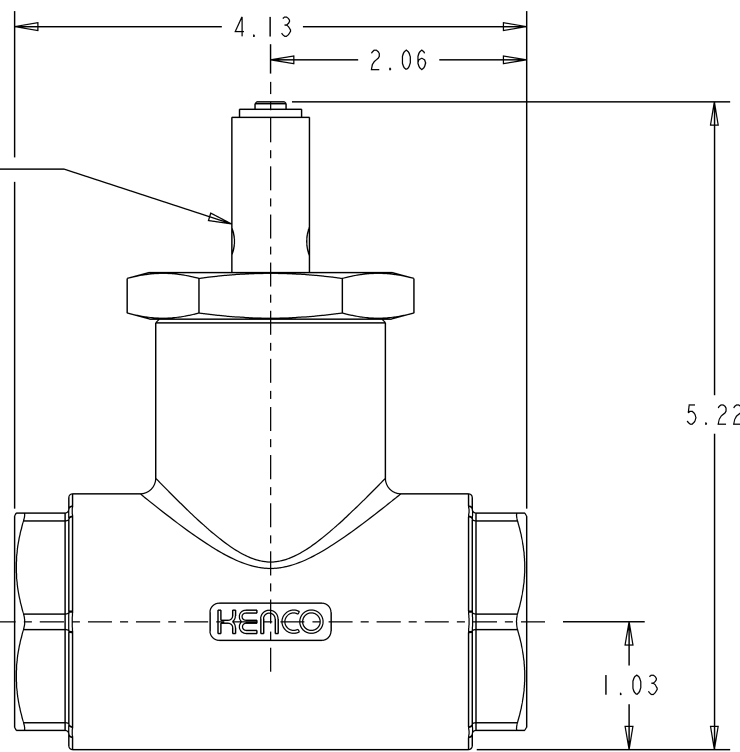
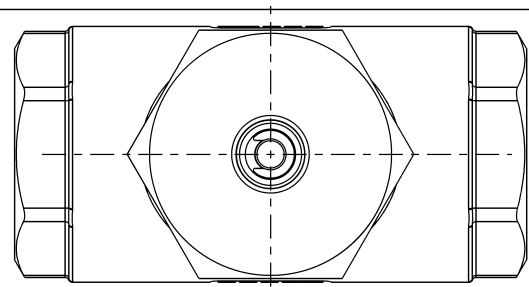


# MODEL 10-KFS & 10-KFS-SS



EUTECTIC FUSE ELEMENT

**MATERIALS OF CONSTRUCTION:**

**CARBON STEEL:**  
 CARBON AND STAINLESS STEEL WITH INCONEL STAINLESS STEEL ACTUATOR SPRING AND PROPRIETARY EUTECTIC FUSE ELEMENT ALLOY.

**STAINLESS STEEL:**  
 ALL STAINLESS STEEL WITH INCONEL STAINLESS STEEL ACTUATOR SPRING AND PROPRIETARY EUTECTIC FUSE ELEMENT ALLOY.

B	03/26/18	BRC	REVISED NOTES TO MATCH CURRENT PROCESS	DIM'S IN INCHES		MATERIAL:	SEE B/M
	N/A	CJ		TOLERANCES UNLESS OTHERWISE SPECIFIED.		RELEASE LEVEL:	RELEASED
A	05-04-15	KLM	RELEASED	ANGULAR ±1/2°	Kenco ENGINEERING Tulsa, Oklahoma USA	DRAWING CREATED IN PRO/ENGINEER	
	000274	KI		FRACTIONAL ±1/64"		TITLE:	VALVE, FIRE SAFE, 1.00 NPT CS & S6
REV.	DATE	DRN.	DESCRIPTION	(X.X) ±0.015"	DRN. BY: KLM	SCALE: 1.000	DRAWING NUMBER
	ECN	CHKD.		(X.XXX) ±0.010"	CHKD. BY: K1	REVISION: B	
PROPRIETARY: THIS DRAWING AND THE INFORMATION CONTAINED HEREIN IS PROPRIETARY TO KENCO ENGINEERING CO. AND SHALL NOT BE REPRODUCED, COPIED, OR DISCLOSED IN WHOLE OR IN PART, OR USED FOR MANUFACTURE OR FOR ANY OTHER PURPOSE WITHOUT THE WRITTEN PERMISSION OF KENCO ENGINEERING.				MACH FILLET RAD: .031" 125 MAX. FINISH. ALL MACHINED SURFACES.	DATE: 05-04-15	SHEET 1 OF 3	71165