

# 929 PUMP SETTING GAUGE



MODEL 929-1-S

## MODEL 929-1-S

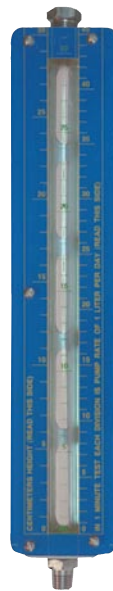
Gauge mounts in suction line between reservoir and chemical pump and allows you to accurately calibrate pump to the desired amount of chemical to be injected. It provides a visual indication of liquid in the reservoir as well as a rapid means for setting the chemical pump.

## MODEL 929-1-S-MRH

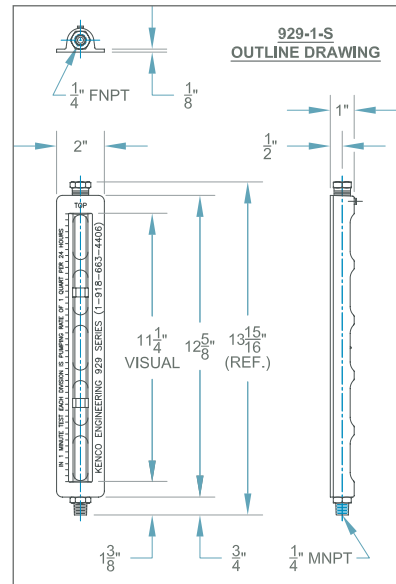
Same as 929-1-S except with a clear polycarbonate sight tube shield with silk screened Metric Rate and Height scales. Scales are in Centimeters, Milliliters and Liters Per Day based on a one minute test.

## MODEL 929-2

Same as 929-1-S except lower gauge connection is a 1/4" quick disconnect plug meeting industrial interchangeability requirements of MIL-C-4109. This allows gauge to be easily moved to various quick disconnect coupler locations.



MODEL 929-1-S-MRH



## MODEL SPECIFICATIONS

MODEL NUMBER	BASIC MODEL DESCRIPTION	*MAXIMUM PUMP RATE	*RATE SCALE DIVISIONS	MOUNTING THREAD	VENT SIZE	WETTED METALS	SIGHT TUBE	SEAL MATERIAL
929-1-S	GAUGE ONLY	11.25 GPD	1 QPD	1/4" MNPT	1/4" FNPT	303 S.S.	GLASS	AFLAS
929-1-S-MRH		42 LPD	1 LPD / 1 ML					
929-1-S6	GAUGE ONLY	11.25 GPD	1 QPD	1/4" MNPT	1/4" FNPT	316 S.S.	GLASS	AFLAS
929-1-S6-MRH		42 LPD	1 LPD / 1 ML					
929-2	929-1-S w/COUPLER PLUG	11.25 GPD	1 QPD	1/4" CPLR. PLUG	1/4" FNPT	C.S. / 303 S.S.	GLASS	AFLAS
929-2-MRH		42 LPD	1 LPD / 1 ML					
1061	QUICK COUPLER f/929-2	N/A	N/A	1/4" MNPT	N/A	C.S.	N/A	BUNA
2037	929-2 COUPLER PLUG			1/4" FNPT				N/A

\*Maximum Pump Rates are based on a one minute test. Rate Scale Divisions in Quarts Per Day / Liters Per Day are based on a one minute test and Scale Divisions in Milliliters are based on gauge volume.

## ORDERING SYSTEM

### 929 Pump Setting Gauges

REQUESTED BY: \_\_\_\_\_ COMPANY: \_\_\_\_\_

ADDRESS: \_\_\_\_\_ CITY: \_\_\_\_\_ STATE: \_\_\_\_\_ ZIP: \_\_\_\_\_

PHONE: \_\_\_\_\_ FAX: \_\_\_\_\_ EMAIL: \_\_\_\_\_

#### Model Number

929-1-S | 929-2  
 929-1-S-MRH | 929-2-MRH  
 929-1-S6 | 1061  
 929-1-S6-MRH | 2037

#### O-ring Seal Material Options other than Aflas:

B = Buna-N  
 E = Ethylene Propylene  
 V = Fluorocarbon  
 T = PTFE (Not available on Test Valve)

Represented by:

Kenco Sales Offices:

PO Box 470426  
 Tulsa, OK 74147  
 phone 918.663.4406  
 fax 918.663.4480  
<http://www.kenco-eng.com>  
 email: info@kenco-eng.com

**Baton Rouge Office**  
 11616 Industriplex, Suite 7  
 Baton Rouge, LA 70809  
 phone 225.755.1912  
 fax 225.755.1913  
<http://www.kenco-eng.com>  
 email: kenco-la@kenco-eng.com

